




Important Warnings


AIR COMPRESSOR AND AIR TOOL SAFETY


1. Risk of Bursting. Do not adjust the regulator to result in output pressure greater than the marked maximum pressure of this air tool.
2. Ensure the hose is free of obstructions or snags. Entangled or snarled hoses can cause loss of balance or footing and may become damaged.
3. Never leave a tool unattended with the air hose attached.
4. Do not operate this tool if it does not contain a legible warning label.
5. Do not continue to use a tool or hose that leaks air or does not function properly.
6. Never direct a jet of compressed air toward people or animals.
7. Protect your lungs. Wear a face or dust mask if the operation is dusty.

 **WARNING:** Hearing Protection is Recommended. Hearing protection should be used when the noise level exposure equals or exceeds an 8 hour time-weighted average sound level of 85dBA.

 **WARNING:** Do not use at a pressure greater than the rated maximum pressure of this air tool.

 **WARNING:** Do not attempt to modify this tool or create accessories not recommended for use with this tool. Any such alteration or modification is misuse and could result in a hazardous condition leading to possible serious personal injury.

 **WARNING:** Operating any power tool can result in foreign objects being thrown into your eyes, which can result in severe eye damage. Before beginning operation, always wear safety goggles, safety glasses with side shields, or a full face shield when needed. Always use eye protection marked to comply with ANSI Z87.1.

 **WARNING:** Avoid Prolonged Exposure to Vibration. Pneumatic tools can vibrate during use. Prolonged exposure to vibration or very repetitive hand and arm movements, can cause injury. Stop using any tool if discomfort, tingling feeling or pain occurs. You should consult your physician before resuming use of the tool.

 **WARNING:** THIS PRODUCT CAN EXPOSE YOU TO CHEMICALS, INCLUDING LEAD, WHICH IS KNOWN TO THE STATE OF CALIFORNIA TO CAUSE CANCER AND BIRTH DEFECTS OR OTHER REPRODUCTIVE HARM. For more information go to www.P65Warnings.ca.gov

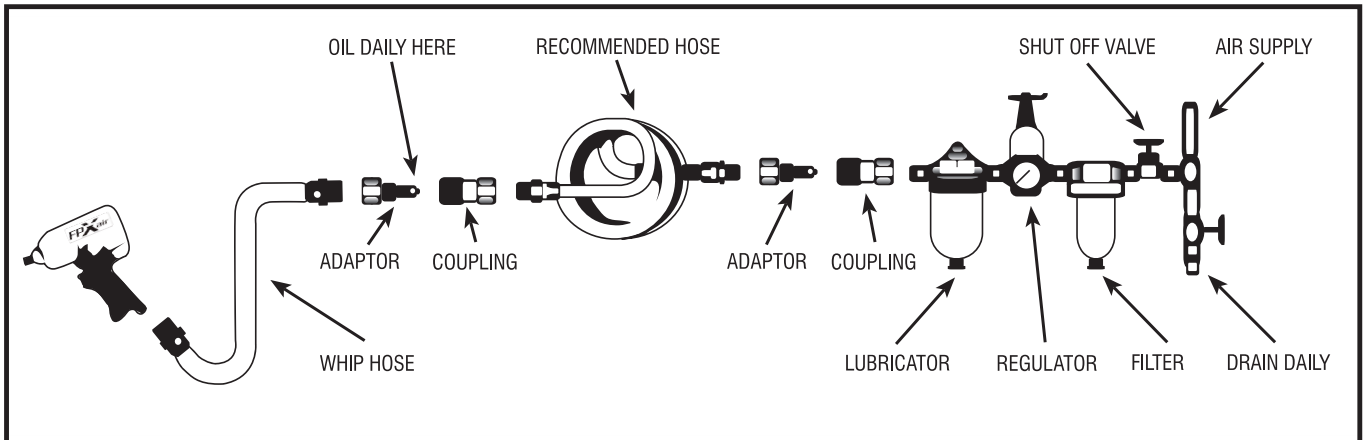
ADVERTENCIA: ESTE PRODUCTO PUEDE EXPONERLO A SUSTANCIAS QUÍMICAS, ENTRE ELLAS PLOMO, QUE EL ESTADO DE CALIFORNIA RECONOCE COMO CAUSANTE DE CANCER, MALFORMACIONES CONGÉNITAS U OTROS DAÑOS AL SISTEMA REPRODUCTOR. Para más información, visita www.P65Warnings.ca.gov

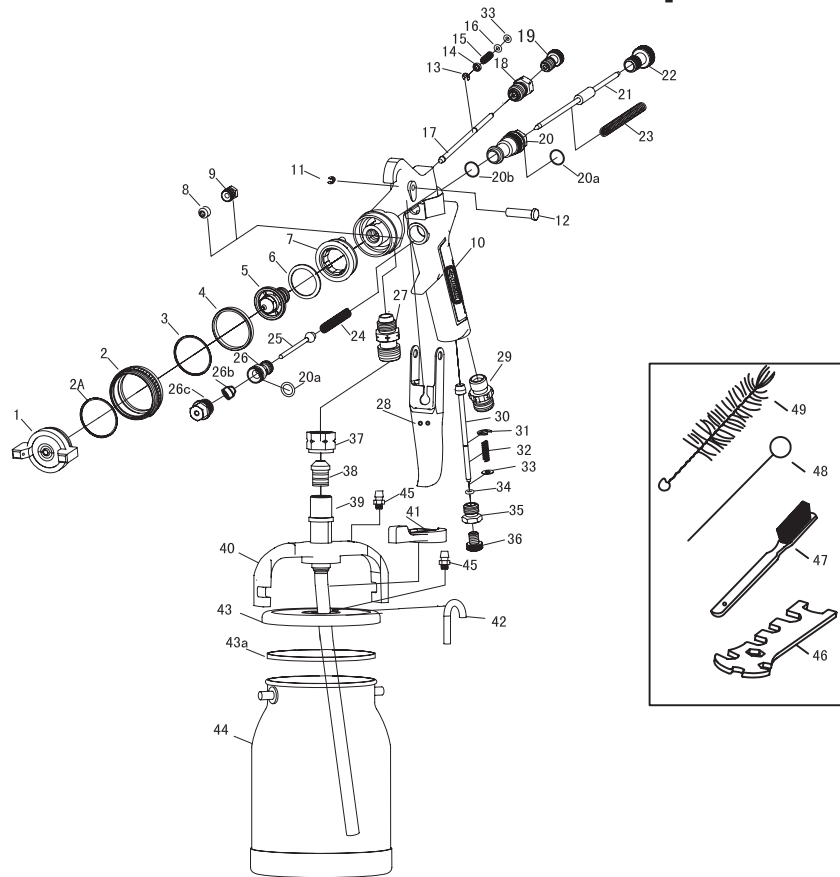
SPECIFICATIONS

| Model | Cup Size (CC) | Spray Pattern (in) | Tip Size (mm) | Weight (lbs) | Length (in) | Maximum Operating Pressure (PSI) | Air Cons. (SCFM) |
|--------|---------------|--------------------|---------------|--------------|-------------|----------------------------------|------------------|
| UT0520 | 1000 | 1.1 - 11.5 | 1.8 | 2.22 | 6.5 | 45 | 4 |

Air Supply

Tools of this class operate on a wide range of air pressure. It is recommended that air pressure of these tools measures 90 PSI at the tool while running free. Higher pressure and unclean air will shorten the tool's life because of faster wear and may create a hazardous condition and void the warranty. Water in the air line will cause damage to the tool. Drain the air tank daily. Clean the air inlet filter screen on at least a weekly schedule. The recommended hookup procedure can be viewed in the illustration below. The air inlet, used for connecting air supply, has standard 1/4" NPT American Thread. Line pressure should be increased to compensate for unusually long air hoses (over 25 feet). Minimum hose diameter should be 3/8" I.D. and fittings should have the same inside dimensions.





| Ref. # | Part Number | Description |
|--------|-------------|------------------------|
| 1 | 9W97021FPX | Air Cap |
| 2 | 9W9701 | Air Cap Ring |
| 3 | 9W9701-1 | Gasket |
| 4 | 9W97023 | Brass Ring |
| 5 | 9W9703 | Nozzle |
| 6 | 9W97031 | Brass Ring |
| 7 | 9W97032 | Pattern Control Gasket |
| 8 | 9W97042 | Fluid Needle Bushing |
| 9 | 9W97041H | Fluid Needle Seat |
| 10 | 9W9705 | Gun Body |
| 11 | 9W98061 | Retainer Ring |
| 12 | 9W9718 | Trigger Retaining Nut |
| 13 | 9W71061 | Retainer Ring |
| 14 | 9W71067 | Brass Ring |
| 15 | 9W71066 | Pattern Control Spring |
| 16 | 9W71062 | O-Ring |
| 17 | 9W97064 | Pattern Control Needle |
| 18 | 9W71063H | Pattern Control Nut |
| 19 | 9W71065FPX | Pattern Control Knob |
| 20 | 9W9708H | Fluid Adj. Bushing |
| 20a | 9W71-13-4 | O-Ring (2) |
| 20b | 9W97081 | Washer |
| 21 | 9W9709H | Fluid Adj. Needle |
| 22 | 9W9712FPX | Fluid Adj. Knob |
| 23 | 9W9710 | Fluid Adj. Spring |
| 24 | 9W7715 | Air Valve Spring |
| 25 | 9W7714 | Air Valve Needle |

| Ref. # | Part Number | Description |
|--------|-------------|---------------------|
| 26 | 9W97133 | Air Valve Bushing |
| 26b | 9W71-13-2 | Air Valve Packing |
| 26c | 9W71-13-1H | Air Valve Bushing |
| 27 | 9W9721H | Paint Inlet Bushing |
| 28 | 9W9719FPX | Trigger Lever |
| 29 | 9W7717H | Air Inlet |
| 30 | 9W77282 | Inlet Set Pin |
| 31 | 9W71061 | Retainer Ring |
| 32 | 9W71283 | Inlet Set Spring |
| 33 | 9W71282 | Washer (2) |
| 34 | 9W71062 | O-Ring |
| 35 | 9W71286H | Inlet Set Nut |
| 36 | 9W71287FPX | Inlet Set Knob |
| 37 | 9W97303 | Locking Nut |
| 38 | 9W97307 | Screw |
| 39 | 9W97302 | Suction Tube |
| 40 | 9W97305-2 | Yoke Assembly |
| 41 | 9W97305-1 | Locking Lever |
| 42 | 9W97309 | Anti Drop Tube |
| 43 | 9W97305 | Canister Lid |
| 43a | 9W71-30-4 | Gasket |
| 44 | 9W97301 | Paint Canister |
| 45 | 9W97308 | Anti Drop Nut (2) |
| 46 | 9W9726 | Wrench |
| 47 | 9W7127 | Soft Brush |
| 48 | 9D41A4105 | Needle |
| 49 | 9D41A4103 | Cleaning Brush |

Maintenance

Other factors outside the tool may cause loss of power or erratic action. Reduced compressor output, excessive drain on the air line, moisture or restriction in air pipes or the use of hose connections of improper size or poor condition may reduce air supply. Grit or gum deposits in the tool may cut power and may be corrected by cleaning the air strainer and flushing out the tool with gum solvent oil or an equal mixture of SAE#10 oil and kerosene. If outside conditions are in order and tool is out-of-warranty, disconnect tool from hose, disassemble tool, replace worm or damaged parts, clean, reassemble, and re-lubricate, or take tool to any air tool service center. For tools in warranty period, send tool direct to Warranty Center.

Lubrication

Ensure the air line is shut-off and drained of air before removing this tool for service or changing sockets. This will prevent the tool from operating if the throttle is accidentally engaged.

An in-line filter-regulator-lubricator is recommended as it increases tool life and keeps the tool in sustained operation.

Regularly check and fill the in-line lubricator with air tool oil. Avoid using excessive amounts of oil.

Adjust the in-line lubricator by placing a sheet of paper next to the tool's exhaust ports and holding the throttle open approximately 30 seconds. The lubricator is properly set when a light stain of oil collects on the paper.

If it is necessary to store the tool for an extended period of time (overnight, weekend, etc.), generously lubricate the tool through the air inlet. Run the tool for approximately 30 seconds to ensure the oil is evenly distributed throughout the tool. Store the tool in a clean and dry environment.

Recommended lubricants: Air tool oil or any other high grade turbine oil containing moisture absorbent, rust inhibitors, metal wetting agents, and an EP (extreme pressure) additive

WARRANTY

Florida Pneumatic Manufacturing Corporation warrants its tools to be free from defects in materials and workmanship for a period of one year. Tools thought to be defective should be returned to the factory, or an authorized service center, transportation charges prepaid, for examination and consequent repair or replacement. This warranty does not cover damage to tools arising from alteration, abuse, or use for other than their intended purpose and does not cover any repairs or replacement made by anyone other than Florida Pneumatic Manufacturing Corporation or its authorized repair stations.



The duration of the Warranty and any other Warranty including, but not limited to, any implied Warranty of merchantability is expressly limited to one year, beginning from the date of the delivery to the original user. The obligation of Florida Pneumatic Manufacturing Corporation under any Warranty, express or implied, is limited solely to the repair or replacement at its factory or authorized repair station of any part which shall prove defective.

UNIVERSAL AIR TOOL COMPANY LIMITED
Unit 8 Lane End Industrial Park HIGH COMBE-BUCKINGHAMSHIRE
Tel:(01494)883300
<https://ut-tools.com/>