

SCALEFORCE 11 PNEUMATIC DECK HAMMER

SF11



FOR FAST DESCALING OF DECKS THE WALK BEHIND SF11 IS A FAST, EFFECTIVE MEANS OF REMOVING HARD COATINGS AND CORROSION.

11 carbide tipped heads quickly fracture even the toughest materials. Perfect for ongoing maintenance or preparation prior to blast cleaning to speed up removal and save costs on abrasives.

The floating head design allows the SF11 to easily follow deformations in the surface meaning coatings will be removed evenly and consistently.



Low vibration



Dust control options available



Non spark options available

FEATURES & BENEFITS

- 11 scaling heads
- Option for replaceable carbide tipped heads or single piece steel pistons
- Optional Beryllium Copper spark resistant heads for use in potentially explosive environments
- Trelawny Vibro-Lo™ vibration reduction for operator comfort and safety
- Optional Trelawny TVS® vacuum shroud system for protection of operators and surrounding environment

APPLICATIONS

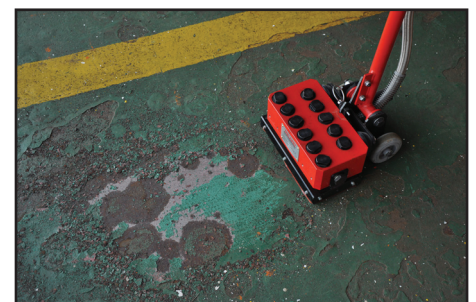
- Ship decks, tank bottoms, bridge decks and floating platform descaling.
- Use ahead of grit blasting to rapidly breakdown coatings



COATING & CORROSION REMOVAL



REMOVAL OF ANTI SKID COATINGS



DUST FREE DESCALING

SCALEFORCE 11 PNEUMATIC DECK HAMMER




SF11

KEY CONSUMABLES & ACCESSORIES

Image	Part Number	Description
	Trelawny: 426.5351 IMPA: 59.03.98 ISSA: 55.095.05	Cruciform taper fit cutter head Tungsten carbide tipped head
	Trelawny: 606.5303 IMPA: 59.03.99 ISSA: 55.095.06	Cruciform taper fit cutter head Beryllium copper spark resistant 
	Trelawny: 426.5352 IMPA: N/A ISSA: N/A	Bush hammer taper fit cutter head Tungsten carbide tipped head
	Trelawny: 612.5301 IMPA: N/A ISSA: N/A	Piston to fit cutter heads
	612.5305 IMPA: N/A ISSA: N/A	Single Piece Steel Piston

Image	Part Number	Description
	Trelawny: 614.5301 IMPA: N/A ISSA: N/A	Brush seal
	Trelawny: 446.1540 IMPA: N/A ISSA: N/A	SF11 Service Kit Consists of: Cruciform Scaler head x11, Piston x11, Brush Seal x11, Cap x 11, Spring Cap x11, Recoil Spring x11, Extractor Plate & Extractor Pin
	Trelawny: 437.0100 IMPA: N/A ISSA: N/A	Vacuum shroud  To be used with pneumatic dust collector 303.10KAV30/WD
	Trelawny: 458.1580 IMPA: N/A ISSA: N/A	Whip Hose & Oiler Assembly Consists of whip hose, whip check and 3/8" lubricator
	Trelawny: 843.0752 IMPA: N/A ISSA: N/A	3/4" air hose complete with couplings 15m length

TECHNICAL DATA

Model	Trelawny Part No.	IMPA Part No.	ISSA Part No.	Cutter Heads	Air Consumption (lps - cfm)	Noise Level (db (A))	Blows Per Min (BPM)	Weight (kg)	Vibration Level (Aeq m/s ²)
SF11 c/w Shroud	159.5912	N/A	N/A	Cruciform taper fit	33 - 70	113.1	3000 x 11	38	5.76 
SF11 Cruciform	159.5910	59.04.05	55.095.01	Cruciform taper fit	33 - 70	113.1	3000 x 11	38	5.76 
SF11 B. Copper	159.5930	59.04.00	55.095.02	Beryllium Copper cruciform taper fit	33 - 70	113.1	3000 x 11	38	5.76 

DIMENSIONS

Model	Trelawny Part No.	IMPA Part No.	ISSA Part No.	Working Width (mm)	Width (mm)	Height (mm)
SF11 c/w Shroud	159.5912	N/A	N/A	252	285	1230
SF11 Cruciform	159.5910	59.04.05	55.095.01	252	285	1230
SF11 B. Copper	159.5930	59.04.00	55.095.02	252	285	1230