

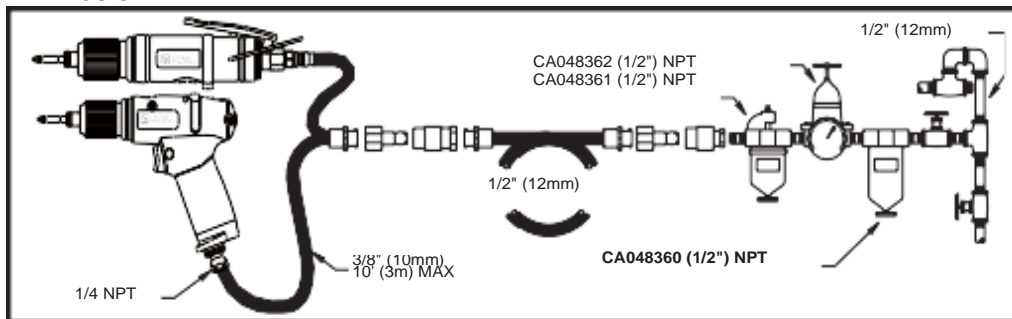
## INSTRUCTION MANUAL

### Air Auto Shut-Off Straight Screwdrivers

This product is designed for installing and removing threaded fasteners in wood, metal, and plastic. The use of spare parts/accessories other than those originally supplied by the manufacturer may result in a drop in performance and/or increased maintenance/noise level/vibrations, and as the result, the full cancellation of the manufacturer's liability. No other use is permitted. For professional use only.

#### Air Supply Requirements

1. Supply tool with 90 PSI (6.3 KG/CM<sup>2</sup>) of clean, dry air. Higher pressure drastically reduces tool life.
2. Connect the tool to the airline using pipe, hose, and fitting sizes shown in the diagram below.

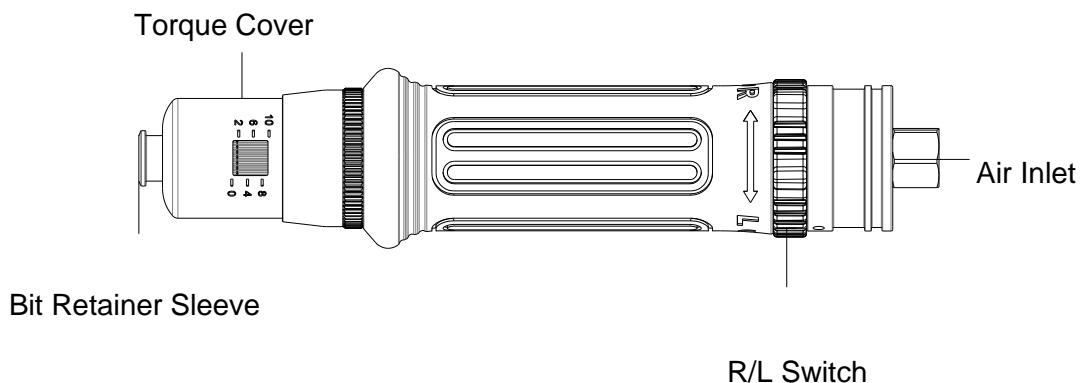


#### Lubrication

1. Use an air line lubricator with SAE #10 oil, adjusted to two (2) drops per minute. If an air line lubricator cannot be used, add air motor oil to the inlet once a day.
2. For gearing and clutch, use Shell-grade grease containing molybdenum.
3. Grease clutches every 12,000 screws.

#### Torque Adjustment

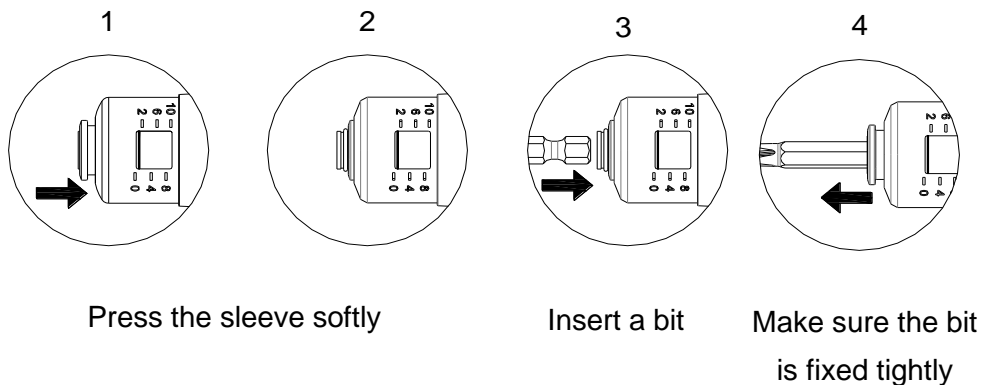
**Shut Off Clutch:** Grip the tool around the handle and press the tool into the fixing which is to be tightened. The motor will start and tighten the fixing to the required torque set by adjusting the tensions on the clutch spring. At this point, the internal drive is disengaged and the air to the motor cut off.



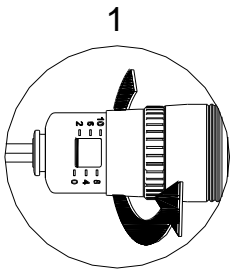
## Operating Procedures

1. Make sure the air in airline is clean and dry.
2. Make sure the tool is connected correctly with the air compressor.
3. Install a bit (as illustrated below). Before using, do check the bit being installed in the tool correctly.
4. Torque Adjustment: Take off the torque cover and turn the torque adjustment ring clockwise to increase the torque. Turn the torque adjustment ring counter-clockwise to reduce the torque. When the torque is set up, put the torque cover back and fasten it tightly to avoid changing the set-up accidentally. (as illustrated below)
5. Right/Left Indication: Turn right (clockwise) the switch (marked “R”) for tightening screws. Turn left (counter-clockwise) the switch (marked “L”) for loosening screws.
6. Push to start: Push the tool to activate the motor.
7. Suggestion: Correct / Re-set torques before operation on a daily basis.
8. If not used for a long time, re-set the tool to the lowest torque.

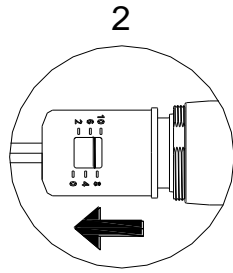
## Installation of Bit



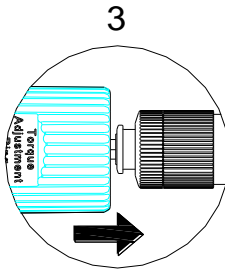
### Set The Torque



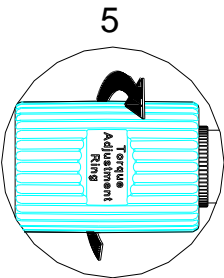
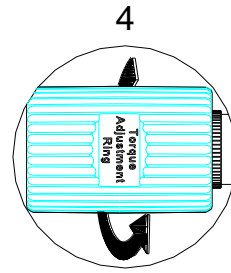
Release the torque cover



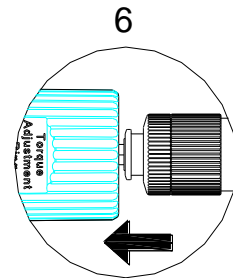
Push Softly



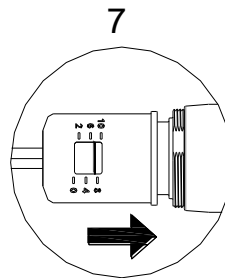
Turn counter clockwise  
to lower the torque



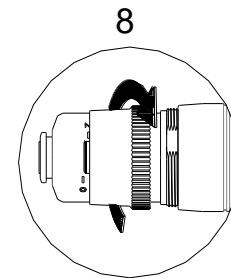
Turn clockwise to  
increase the torque



Take off the  
adjustment ring



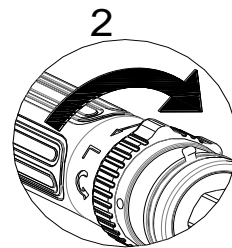
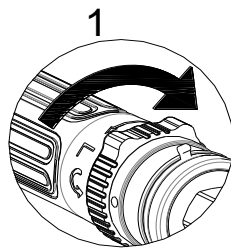
Put the torque  
cover back



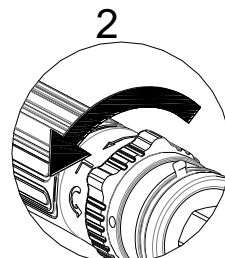
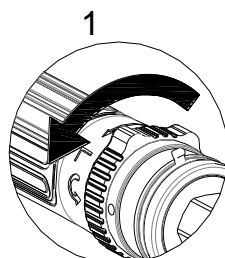
Fasten the rear  
housing

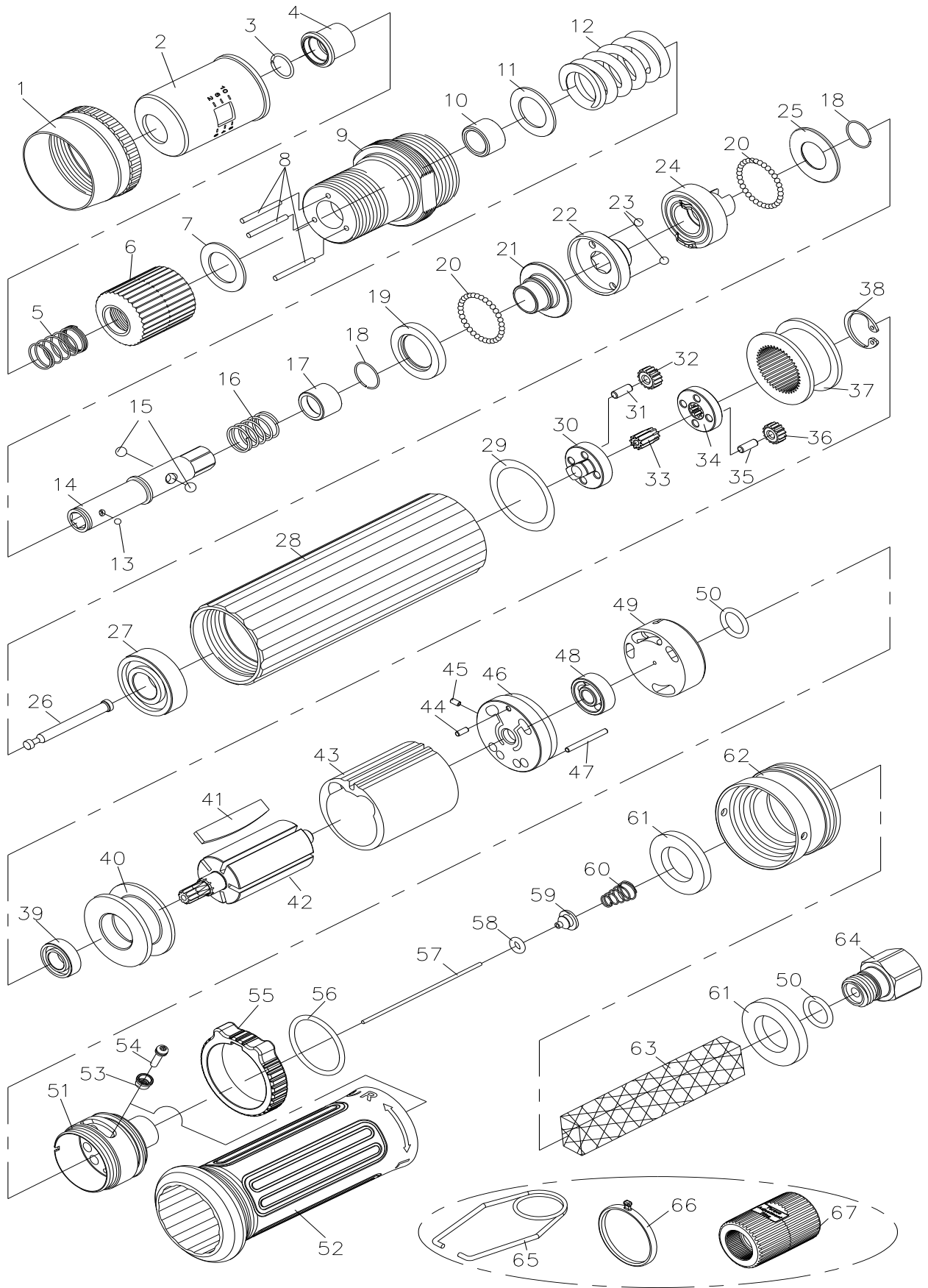
### R/L Switch

R Indication – turn right (clockwise) – fastening screw



L Indication – turn left (counter-clockwise) – loosening screw



**UT8934 AUTO SHUT-OFF STRAIGHT SCREWDRIVER - 550rpm / 1.5~10Nm**


**UT8934 AUTO SHUT-OFF STRAIGHT SCREWDRIVER - 550rpm / 1.5~10Nm**

INDEX#	PARTS NO.	PARTS DESCRIPTION	QTY/SET	INDEX#	PARTS NO.	PARTS DESCRIPTION	QTY/SET
1	7160001PS	HOUSING CAP	1	41	7160041PS	BLADE	5
2	7160061PS	TORQUE COVER	1	42	7160040PS	ROTOR	1
3	7160002PS	C RING	1	43	7160042PS	CYLINDER	1
4	7160003PS	BIT RETAINER SLEEVE	1	44	SPP0208	SPRING PIN	1
5	7160004PS	SPRING	1	45	7160045PS	PIN	1
6	7160005PS	TORQUE RING	1	46	7160043PS	END PLATE	1
7	7160006PS	REGULATION WASHER	1	47	7160046PS	PIN	1
8	7160007PS	NEEDLE PIN	3	48	B6062Z	BALL BEARING	1
9	7160008PS	CLUTCH HOUSING	1	49	7160048PS	VALVE	1
10	7160009PS	ANVIL BUSHING	1	50	OR1898	O-RING	2
11	7160010PS	WASHER	1	51	7160050PS	END HOUSING	1
12	7160011PS	TORQUE SPRING	1	52	7160063PS	GRIP	1
13	7160013PS	STEEL BALL	1	53	7160060PS	SCREW HOLDER	1
14	7160012PS	ANVIL	1	54	7160052PS	SCREW	1
15	7160014PS	STEEL BALL	2	55	7160051PS	SWITCH	1
16	7160015PS	SPRING	1	55	7160051PS-RD	SWITCH	1
17	7160016PS	SLIDE BASE	1	56	OR283178	O-RING	1
18	7160017PS	C RING	2	57	7160054PS	OPERATING ROD	1
19	7160018PS	BALL RACE	1	58	OR0302	O-RING	1
20	7160019PS	STEEL BALL	60	59	7160056PS	VALVE PLATE	1
21	7160020PS	END CLUTCH	1	60	7160057PS	SPRING	1
22	7160021PS	CENTER CLUTCH	1	61	7160058PS	SILENCER	2
23	STB3175	STEEL BALL	2	62	7160059PS	EXHAUST DEFLECTOR	1
24	7160023PS	REAR CLUTCH	1	63	ZZ389507	SILENCER	1
25	7160024PS	RETAINER	1	64	7160062PS	AIR INLET	1
26	7160025PS	PILOT PIN	1	65	CP1HP60	SUSPENSION RING	1
27	B6001Z-TPI	BALL BEARING	1	66	7160080PS	DISTINGUISHABLE RING (4)	1
28	7160027PS	CENTER HOUSING	1	67	7160064PS	TORQUE ADJUSTMENT RING	1
29	7160028PS	WASHER	1				
30	7160029PS	GEAR CAGE	1				
31	7160030PS	PIN	4				
32	7160031PS	PLANT GEAR	4				
33	7160032PS	SUN GEAR	1				
34	7160033PS	GEAR CAGE	1				
35	7160034PS	PIN	4				
36	7160035PS	PLANT GEAR	4				
37	7160036PS	INTERNAL GEAR	1				
38	RTW-16	C RING	1				
39	L-1680HH	BALL BEARING	1				
40	7160039PS	FRONT PLATE	1				

Division of Florida Pneumatic Mfg Corp.,  
851 Jupiter Park Lane,  
Jupiter, FL 33458, USA.  
Ph: (1) 561 744 9500  
Fax: (1) 561 575 5574

## EC/UKCA DECLARATION OF CONFORMITY

We **FLORIDA PNEUMATIC MFG CORP, 851 JUPITER PARK LANE, JUPITER, FL 33458, USA**

Declare under our sole responsibility that the machine falls within the provisions of the directive:

**Machine Type:** UT8934 Air Auto Shut-Off Screwdriver

Technical Data:

<b>Chuck Size :</b>	<u>1/4" HEX QC</u>	<b>Free Speed:</b>	<u>550 rpm</u>
<b>Weight:</b>	<u>0.84 kg (1.85 lbs)</u>	<b>Length:</b>	<u>227 mm (8.9")</u>
<b>Recommended Hose Size:</b>	<u>10m (3/8")</u>	<b>Working Air Pressure:</b>	<u>6.3 bar (90 PSI)</u>
<b>Noise:</b> (sound pressure level)	<u>72 dB(A)</u>	<b>Vibration:</b>	<u>1.81 Metres / Sec <sup>2</sup></u>
<b>Spindle size:</b>	<u>N/A</u>	<b>Serial No:</b>	_____

To which this declaration relates, is in conformity with the requirements of : The Machinery Directive 2006/42/EC,  
General Safety ISO 12100:2010, Specific Safety -Impact Wrenches: ISO 11148-6: 2012, Specific Vibration- ISO  
28927, Noise: ISO 15744:2008

Name and position of issuer: **Tony Le Neveu: V P Engineering & Development**

