

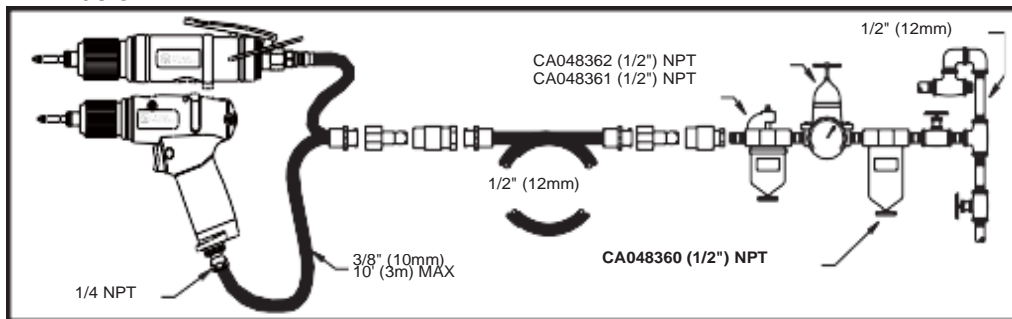
INSTRUCTION MANUAL

Air Auto Shut-Off Straight Screwdrivers

This product is designed for installing and removing threaded fasteners in wood, metal, and plastic. The use of spare parts/accessories other than those originally supplied by the manufacturer may result in a drop in performance and/or increased maintenance/noise level/vibrations, and as the result, the full cancellation of the manufacturer's liability. No other use is permitted. For professional use only.

Air Supply Requirements

1. Supply tool with 90 PSI (6.3 KG/CM²) of clean, dry air. Higher pressure drastically reduces tool life.
2. Connect the tool to the airline using pipe, hose, and fitting sizes shown in the diagram below.

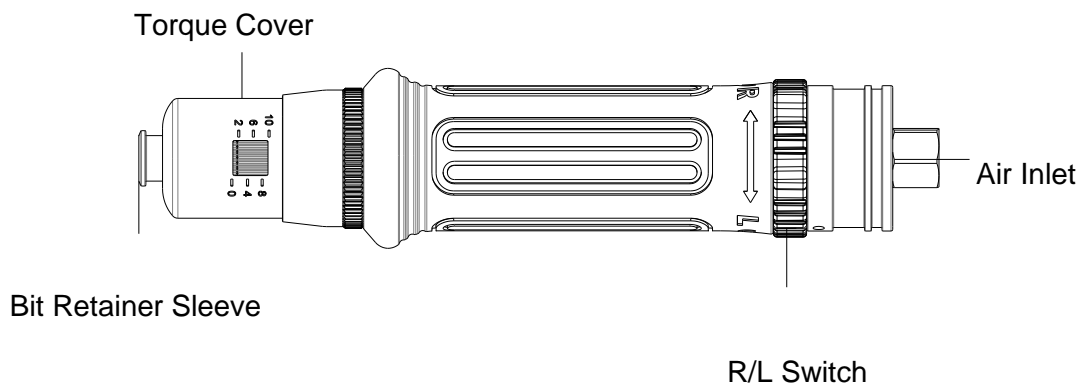


Lubrication

1. Use an air line lubricator with SAE #10 oil, adjusted to two (2) drops per minute. If an air line lubricator cannot be used, add air motor oil to the inlet once a day.
2. For gearing and clutch, use Shell-grade grease containing molybdenum.
3. Grease clutches every 12,000 screws.

Torque Adjustment

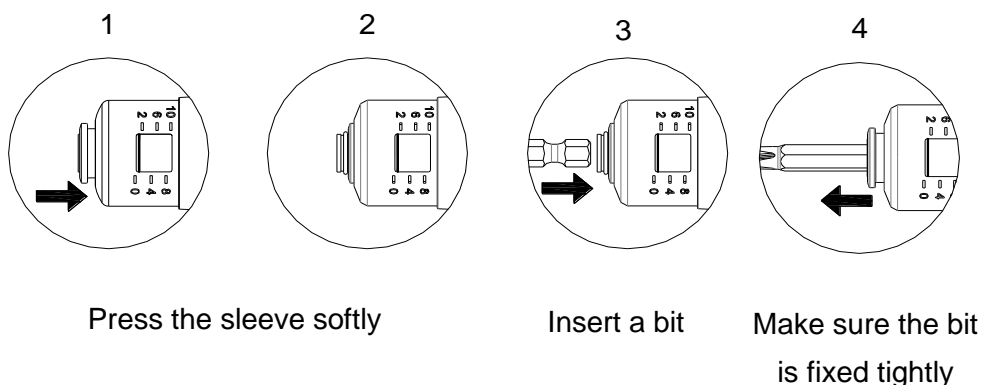
Shut Off Clutch: Grip the tool around the handle and press the tool into the fixing which is to be tightened. The motor will start and tighten the fixing to the required torque set by adjusting the tensions on the clutch spring. At this point, the internal drive is disengaged and the air to the motor cut off.



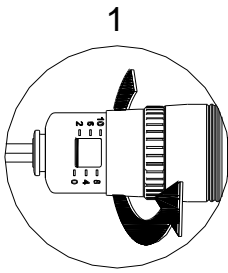
Operating Procedures

1. Make sure the air in airline is clean and dry.
2. Make sure the tool is connected correctly with the air compressor.
3. Install a bit (as illustrated below). Before using, do check the bit being installed in the tool correctly.
4. Torque Adjustment: Take off the torque cover and turn the torque adjustment ring clockwise to increase the torque. Turn the torque adjustment ring counter-clockwise to reduce the torque. When the torque is set up, put the torque cover back and fasten it tightly to avoid changing the set-up accidentally. (as illustrated below)
5. Right/Left Indication: Turn right (clockwise) the switch (marked “R”) for tightening screws. Turn left (counter-clockwise) the switch (marked “L”) for loosening screws.
6. Push to start: Push the tool to activate the motor.
7. Suggestion: Correct / Re-set torques before operation on a daily basis.
8. If not used for a long time, re-set the tool to the lowest torque.

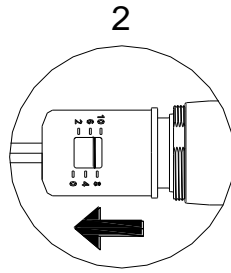
Installation of Bit



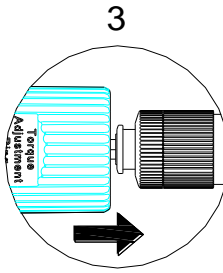
Set The Torque



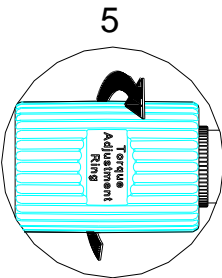
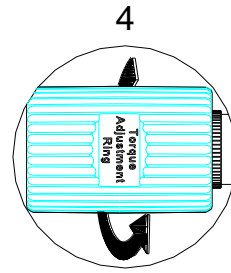
Release the torque cover



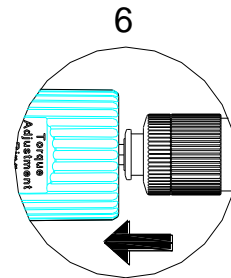
Push Softly



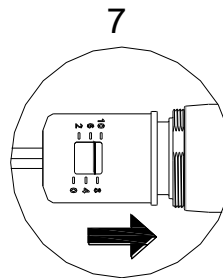
Turn counter clockwise
to lower the torque



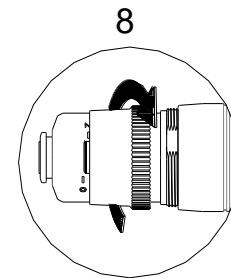
Turn clockwise to
increase the torque



Take off the
adjustment ring



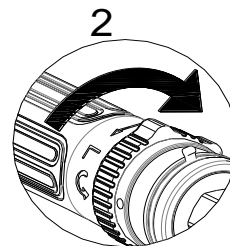
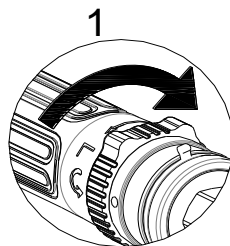
Put the torque
cover back



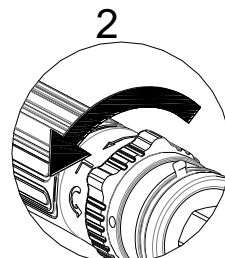
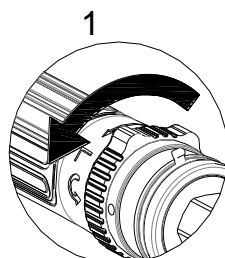
Fasten the rear
housing

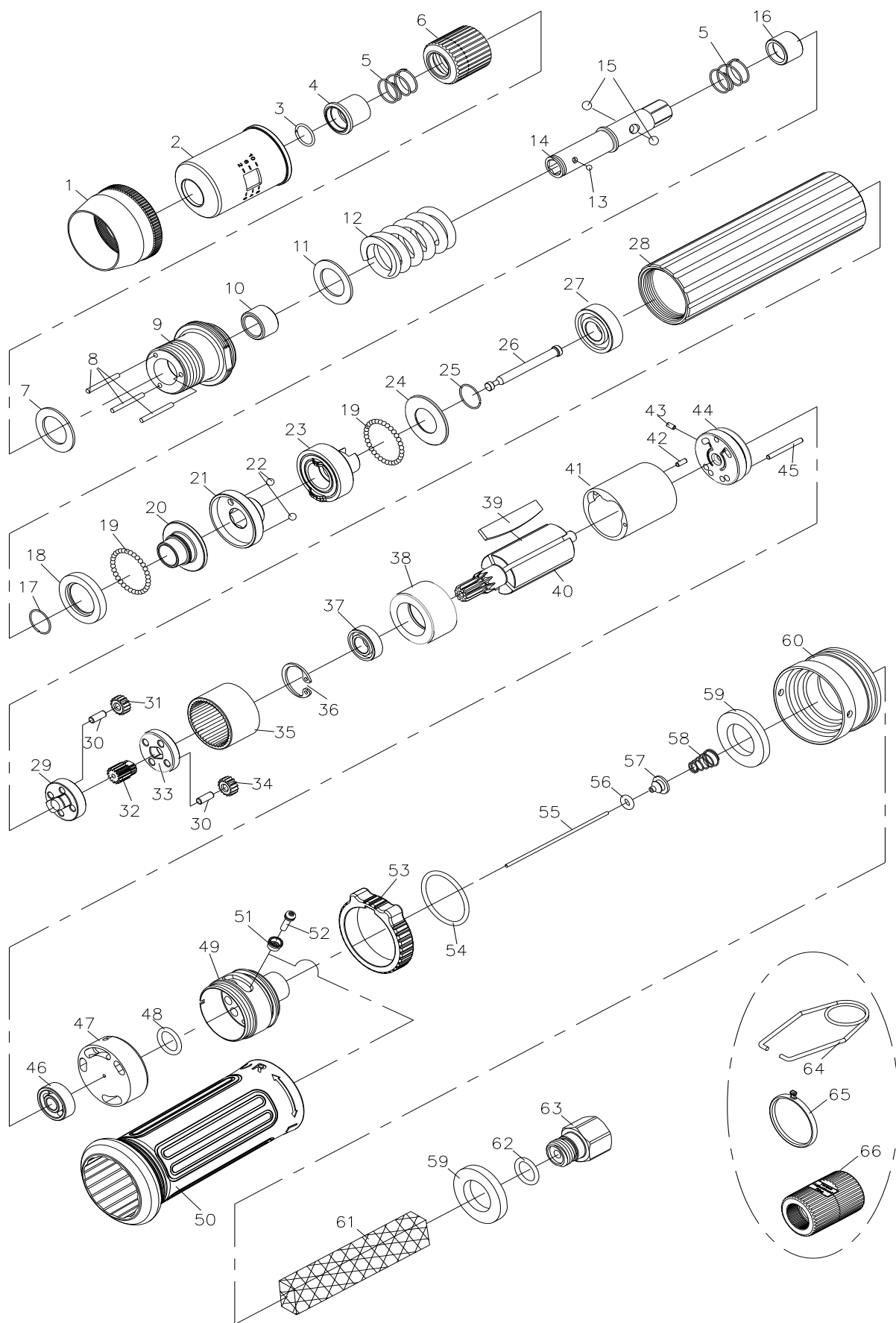
R/L Switch

R Indication – turn right (clockwise) – fastening screw



L Indication – turn left (counter-clockwise) – loosening screw



UT8932 AUTO SHUT-OFF STRAIGHT SCREWDRIVER 900rpm/0.5~3.0Nm


UT8932 AUTO SHUT-OFF STRAIGHT SCREWDRIVER 900rpm/0.5~3.0Nm

INDEX #	PARTS NO.	PARTS DESCRIPTION	QTY/ SET	INDEX #	PARTS NO.	PARTS DESCRIPTION	QTY/ SET
1	7120001PS	HOUSING CAP	1	41	7120042PS	CYLINDER	1
2	7120061PS-W	TORQUE COVER	1	42	SPP0208	SPRING PIN	1
3	7160002PS	C RING	1	43	7120045PS	PIN	1
4	7120003PS	BIT RETAINER SLEEVE	1	44	7120043PS	END PLATE	1
5	7120004PS	SPRING	2	45	7160046PS	PIN	1
6	7120005PS	TORQUE RING	1	46	R-1340HH	BALL BEARING	1
7	7160006PS	REGULATION WASHER	1	47	7120048PS	VALVE	1
8	7140007PS	PIN	3	48	OR0602	O-RING	1
9	7120008PS	CLUTCH HOUSING	1	49	7120050PS	END HOUSING	1
10	7120009PS	ANVIL BUSHING	1	50	7120063PS	GRIP	1
11	7120010PS	WASHER	1	51	7160060PS	SCREW HOLDER	1
12	7140011PS	TORQUE SPRING	1	52	7160052PS	SCREW	1
13	7160013PS	STEEL BALL	1	53	7120051PS-RD	SWITCH	1
14	7120012PS	ANVIL	1	54	OR2352178	O-RING	1
15	7160014PS	STEEL BALL	2	55	7120054PS	OPERATING ROD	1
16	7120016PS	SLIDE BASE	1	56	OR0302	O-RING	1
17	7120064PS	C RING	1	57	7160056PS	VALVE PLATE	1
18	7120018PS	BALL RACE	1	58	7160057PS	SPRING	1
19	7160019PS	STEEL BALL	53	59	7160058PS	SILENCER	2
20	7120020PS	END CLUTCH	1	60	7120059PS	EXHAUST DEFLECTOR	1
21	7120021PS	CENTER CLUTCH	1	61	ZZ389507	SILENCER	1
22	STB3175	STEEL BALL	2	62	OR1898	O-RING	1
23	7120023PS	REAR CLUTCH	1	63	7160062PS	AIR INLET	1
24	7120024PS	RETAINER	1	64	CP1HP60	SUSPENSION RING	1
25	7160017PS	C RING	1	64	7160080PS	DISTINGUISHABLE RING, 4PC/SET	1
26	7120025PS	PILOT PIN	1	66	7160064PS	TORQUE ADJUSTMENT RING	1
27	B6901ZZ	BALL BEARING	1				
28	7120027PS	CENTER HOUSING	1				
29	7155029PS	GEAR CAGE	1				
30	7160034PS	PIN	8				
31	7155035PS	PLANT GEAR	4				
32	7155065PS	SUN GEAR	1				
33	7120033PS	GEAR CAGE	1				
34	7160035PS	PLANT GEAR	4				
35	7120036PS	INTERNAL GEAR	1				
36	RTW-16	C RING	1				
37	L-1680HH	BALL BEARING	1				
38	7120039PS	FRONT PLATE	1				
39	7120041PS	BLADE	5				
40	7120040PS	ROTOR	1				

Division of Florida Pneumatic Mfg Corp.,
851 Jupiter Park Lane,
Jupiter, FL 33458, USA.
Ph: (1) 561 744 9500
Fax: (1) 561 575 5574

EC/UKCA DECLARATION OF CONFORMITY

We **FLORIDA PNEUMATIC MFG CORP, 851 JUPITER PARK LANE, JUPITER, FL 33458, USA**

Declare under our sole responsibility that the machine falls within the provisions of the directive:

Machine Type: UT8932 Air Auto Shut-Off Screwdriver

Technical Data:

Chuck Size :	<u>1/4" HEX QC</u>	Free Speed:	<u>900 rpm</u>
Weight:	<u>0.52kg (1.14 lbs)</u>	Length:	<u>193 mm (7.59")</u>
Recommended Hose Size:	<u>10m (3/8")</u>	Working Air Pressure:	<u>6.3 bar (90 PSI)</u>
Noise: (sound pressure level)	<u>72 dB(A)</u>	Vibration:	<u>1.81 Metres / Sec ²</u>
Spindle size:	<u>N/A</u>	Serial No:	_____

To which this declaration relates, is in conformity with the requirements of : The Machinery Directive 2006/42/EC,
General Safety ISO 12100:2010, Specific Safety -Impact Wrenches: ISO 11148-6: 2012, Specific Vibration- ISO
28927, Noise: ISO 15744:2008

Name and position of issuer: **Tony Le Neveu: V P Engineering & Development**

