

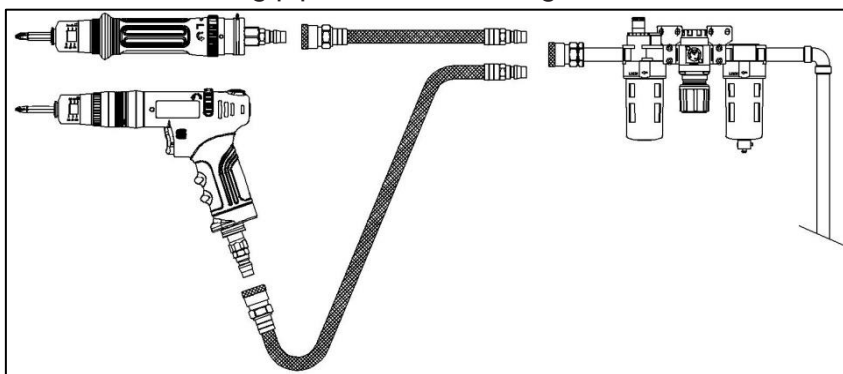
## INSTRUCTION MANUAL - ENGLISH

### Air Auto Shut-Off Pistol Screwdriver

This product is designed for installing and removing threaded fasteners in wood, metal and plastic. The use of spare parts/ accessories other than those originally supplied by the manufacturer may result in a drop in performance and/or increased maintenance / noise level / vibrations. As a result, the full cancellation of the manufacturer's liability. No other use is permitted. Professional use only.

#### Air Supply Requirements

1. Supply tool with 6.35 KG/CM<sup>2</sup> (90 PSI) clean and dry air. Too much pressure drastically reduces the tool life.
2. Connect the tool to air line using pipe, hose and fitting sizes shown in the diagram below.

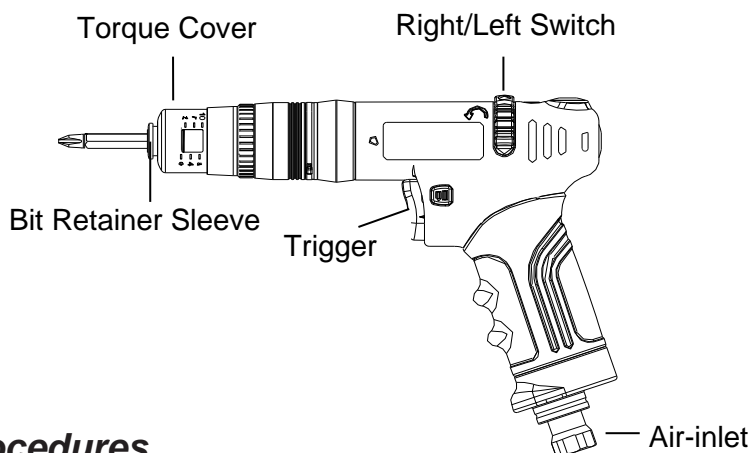


#### Lubrication

1. Use an air line lubricator with SAE #10 oil. Adjusted to two (2) drops per minute. If an air line lubricator is not available, add air motor oil to the inlet once a day.
2. For gearing and clutch, use Shell-grade grease containing molybdenum.
3. Grease clutches every 12,000 screws.

#### Torque Adjustment

**Shut Off Clutch:** Grip the tool around the handle and press the tool into the fixing which is to be tightened. The motor will start and tighten the fixing to the required torque set by adjusting the tension on the clutch spring. At this point, the internal drive is disengaged and the air to the motor cut off.



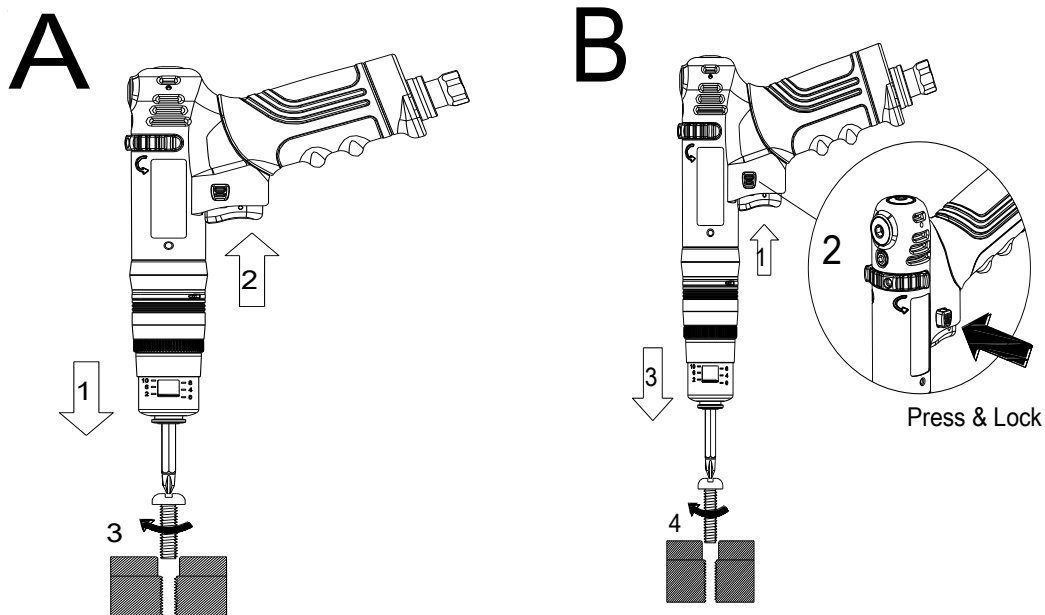
#### Operating Procedures

1. Make sure the air in air line is clean and dry.
2. There are three air-inlets on the tool. Depending on different usage, choose one inlet to connect correctly with the air compressor. Screw up the other two air-inlets separately with screw caps.
3. Install a bit (as illustrated below). Before using, do check the bit being installed on the tool correctly.
4. Torque Adjustment: Take off the torque cover and turn the torque adjustment ring right (clockwise) to increase the torque. Turn the torque adjustment ring left (counter-clockwise) to reduce the torque. After setting up the torque, put torque cover back and fasten it tightly to avoid changing set-up accidentally. (as illustrated below)
5. Right/Left Indication: Turn right (clockwise) the switch (marked “R”) for tightening screws. Turn left (counter-clockwise) the switch (marked “L”) for loosening screws.

#### 6. Two ways to operate:

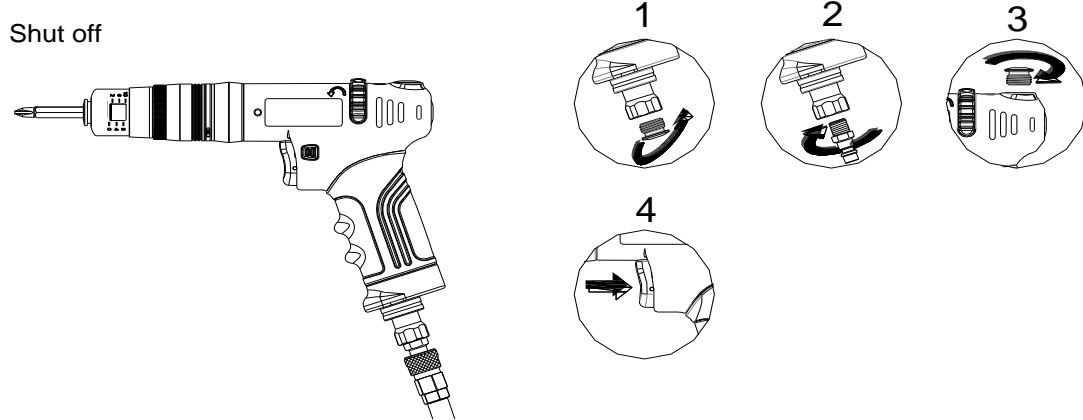
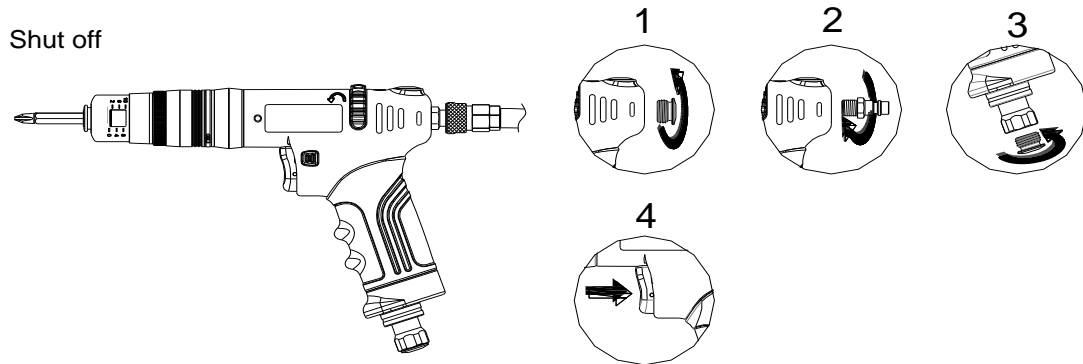
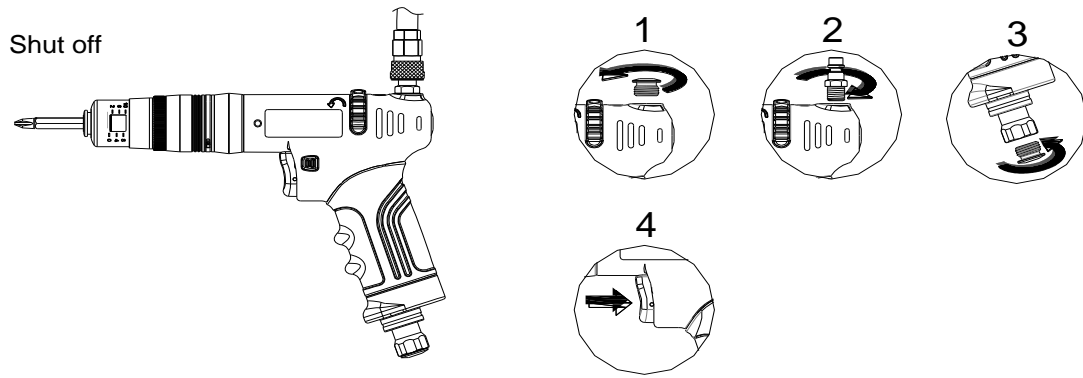
**A. Push + Pull The Trigger to Start:** Set the bit aiming the screw. Push down the tool steadily and pull the trigger to activate the motor. When the required torque is reached, the motor will shut off automatically. Either releasing the trigger or take the tool away from the fixing will stop the motor. (Dual security design)

**B. Push to Start:** Press the trigger and push the “Locking” switch to the right to lock the trigger. Push down the tool steadily to activate the motor. The operation can be repeated without pulling trigger constantly. When the required torque is reached, the motor will shut off automatically.

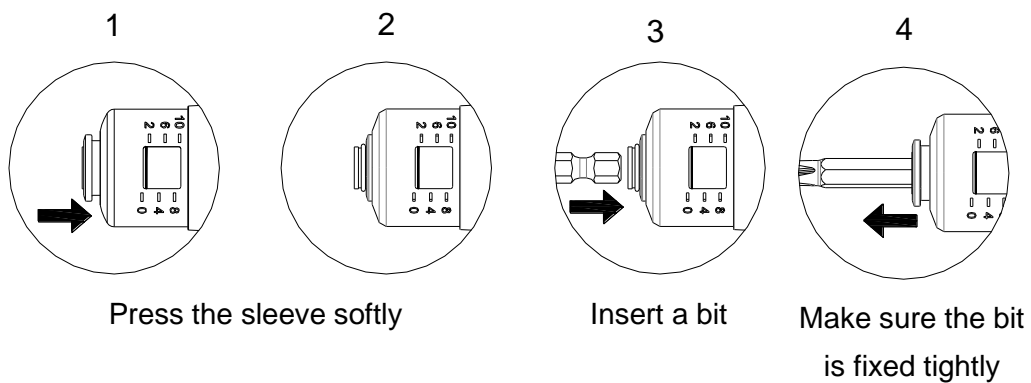


7. Suggestion: Correct / Re-set torques before operation on a daily basis.
8. If the tool is not to be used for a long time, re-set the torque to the lowest.

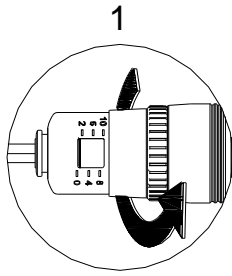
## Switch Operation of Three Way Air-inlet



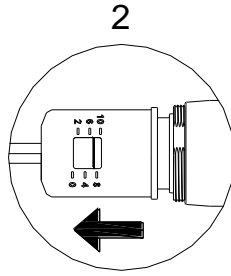
## Installation of Bit



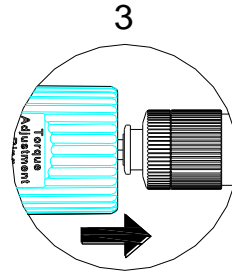
## Set-up of Torque



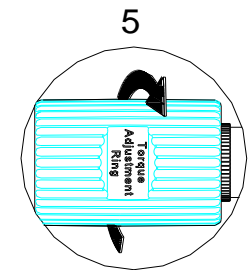
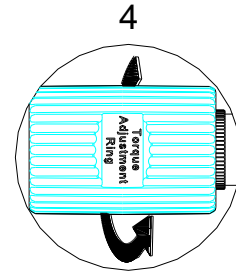
Release and remove the torque cover



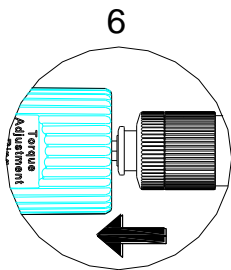
Insert torque adjustment ring to the tool



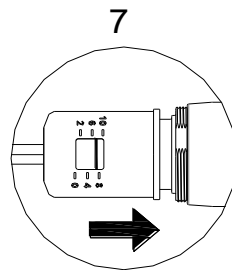
Turn counter clockwise to lower the torque



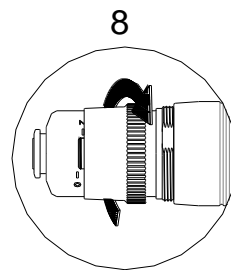
Turn clockwise to increase the torque



Take off the adjustment ring

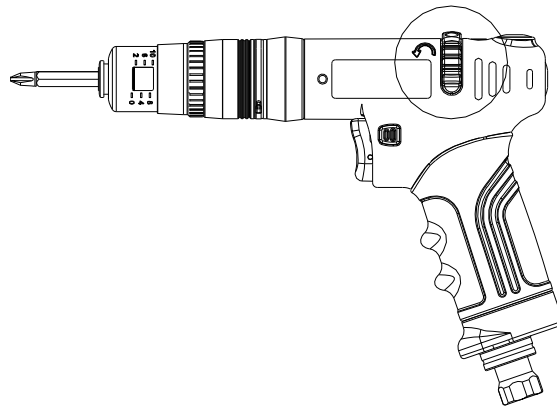


Put the torque cover back



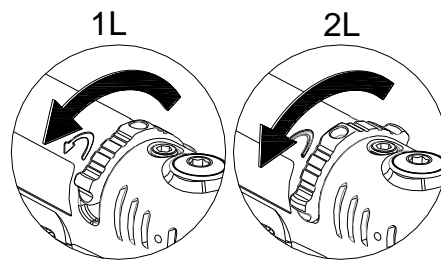
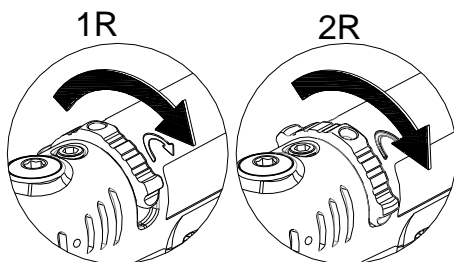
Fasten the rear housing tightly

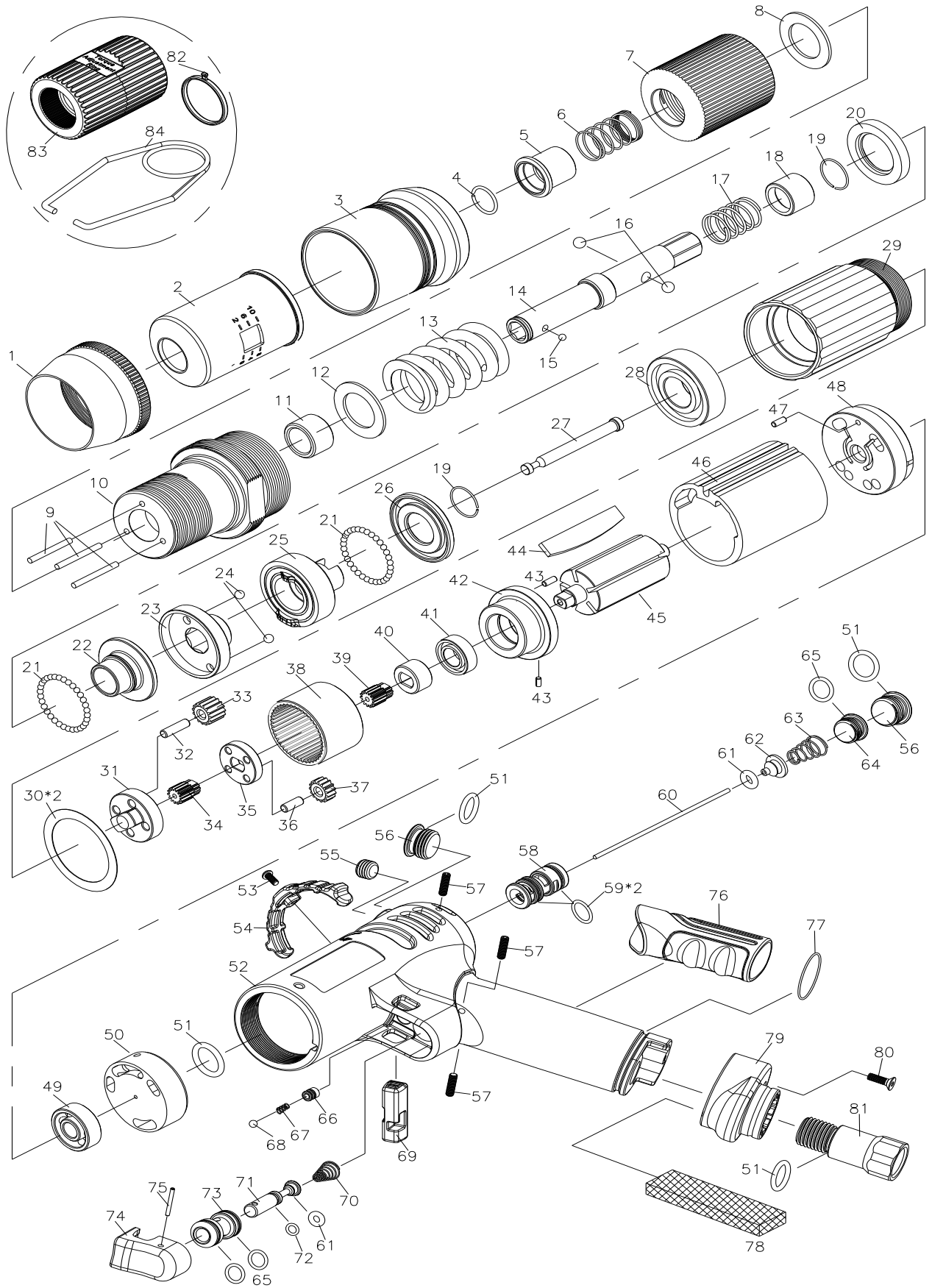
## Operation of R/L Switch



**R Indication** – turn right (clockwise)  
– fastening screw

**L Indication** – turn left (counter clockwise)  
– loosening screw



**UT8942 AUTO SHUT-OFF PISTOL SCREWDRIVER, 900rpm / 0.7~6.5Nm**


**UT8942 AUTO SHUT-OFF PISTOL SCREWDRIVER, 900rpm / 0.7~6.5Nm**

INDEX NO	PARTS NO.	DESCRIPTION	QTY/SET	INDEX NO	PARTS NO.	DESCRIPTION	QTY/SET
1	7160001PS	REAR HOUSING	1	45	7155040PS	ROTOR	1
2	7160061PS-W	TORQUE COVER	1	46	7160042PS	CYLINDER	1
3	7160070PG	HOUSING CAP	1	47	SPP0208	SPRING PIN	1
4	7160002PS	C RING	1	48	7160043PS	END PLATE	1
5	7160003PS	BIT RETAINER SLEEVE	1	49	B6062Z	BALL BEARING	1
6	7160004PS	SPRING	1	50	7160048PG	VALVE	1
7	7160005PS	TORQUE RING	1	51	OR1898	O-RING	4
8	7160006PS	REGULATION WASHER	1	52	7160063PG-BK	MOTOR HOUSING	1
9	7120007PS	NEEDLE	3	53	7160052PS	SCREW	1
10	7160008PS	CLUTCH HOUSING	1	54	7160051PG-RD	SWITCH	1
11	7160009PS	ANVIL BUSHING	1	55	HEXM806	SCREW	1
12	7160010PS	WASHER	1	56	7120067PG	SCREW CAP	2
13	7155011PS	TORQUE SPRING	1	57	HEXM308	SCREW	4
14	7160012PS	ANVIL	1	58	7120069PG	VALVE BUSHING	1
15	7160013PS	STEEL BALL	1	59	589058	O-RING	2
16	7160014PS	STEEL BALL	2	60	7160054PS	OPERATING ROD	1
17	7160015PS	SPRING	1	61	OR0302	O-RING	2
18	7160016PS	SLIDE BASE	1	62	7160056PS	VALVE PLATE	1
19	7160017PS	C RING	2	63	7160057PS	SPRING	1
20	7160018PS	BALL RACE	1	64	7120068PG	SCREW	1
21	7160019PS	STEEL BALL	60	65	OR0612	O-RING	3
22	7160020PS	END CLUTCH	1	66	7120076PG	PLUG	1
23	7160021PS	CENTER CLUTCH	1	67	611239-1	SPRING	1
24	STB3175	STEEL BALL	2	68	SB0003-1	STEEL BALL	1
25	7160023PS	REAR CLUTCH	1	69	7120075PG	TRIGGER LOCKING	1
26	7160024PS	RETAINER	1	70	7120073PG	SPRING	1
27	7160025PS	PILOT PIN	1	71	7120065PG	TRIGGER PIN	1
28	B6001ZZ-TPI	BALL BEARING	1	72	OR0312	O-RING	1
29	7160027PG	CENTER HOUSING	1	73	7120066PG	BUSHING	1
30	7160028PG	SPACER	2	74	7120074PG	TRIGGER	1
31	7120029PS	GEAR CAGE	1	75	SPP0214	SPRING PIN	1
32	7160030PS	PIN	4	76	7120072PG	GRIP	1
33	7155031PS	PLANETARY GEAR	4	77	OR2402	O-RING	1
34	7150032PS	SUN GEAR	1	78	ZZ389507	SILENCER	1
35	7150033PS	GEAR CAGE	1	79	7120071PG	EXHAUST DEFLECTOR	1
36	7160034PS	PIN	4	80	861432-3	SCREW	1
37	7155035PS	PLANETARY GEAR	4	81	7120062PG	AIR INLET	1
38	7120036PS	INTERNAL GEAR	1	82	7160080PS	DISTINGUISHABLE RING (4)	1
39	7155065PS	SUN GEAR	1	83	7160064PS	TORQUE ADJUSTMENT RING	1
40	7155066PS	RETAINER COLLAR	1	84	CP1HP60	SUSPENSION RING	1
41	L-1680HH	BALL BEARING	1				
42	7160039PG	FRONT PLATE	1				
43	589040	SPRING PIN	2				
44	7160041PS	BLADE	5				

Division of Florida Pneumatic Mfg Corp.,  
851 Jupiter Park Lane,  
Jupiter, FL 33458, USA.  
Ph: (1) 561 744 9500  
Fax: (1) 561 575 5574

## EC/UKCA DECLARATION OF CONFORMITY

We **FLORIDA PNEUMATIC MFG CORP, 851 JUPITER PARK LANE, JUPITER, FL 33458, USA**

Declare under our sole responsibility that the machine falls within the provisions of the directive:

Machine Type:            UT8942 Air Auto Shut-Off Screwdriver

Technical Data:

<b>Chuck Size :</b>	<u>1/4" HEX QC</u>	<b>Free Speed:</b>	<u>900 rpm</u>
<b>Weight:</b>	<u>1.11 kg (2.45 lbs)</u>	<b>Length:</b>	<u>227 mm (8.94")</u>
<b>Recommended Hose Size:</b>	<u>10m (3/8")</u>	<b>Working Air Pressure:</b>	<u>6.3 bar (90 PSI)</u>
<b>Noise:</b> (sound pressure level)	<u>72 dB(A)</u>	<b>Vibration:</b>	<u>1.81 Metres / Sec <sup>2</sup></u>
<b>Spindle size:</b>	<u>N/A</u>	<b>Serial No:</b>	_____

To which this declaration relates, is in conformity with the requirements of : The Machinery Directive 2006/42/EC, General Safety ISO 12100:2010, Specific Safety-Impact Wrenches: ISO 11148-6: 2012, Specific Vibration- ISO 28927, Noise: ISO 15744:2008

Name and position of issuer: **Tony Le Neveu: V P Engineering & Development**

