

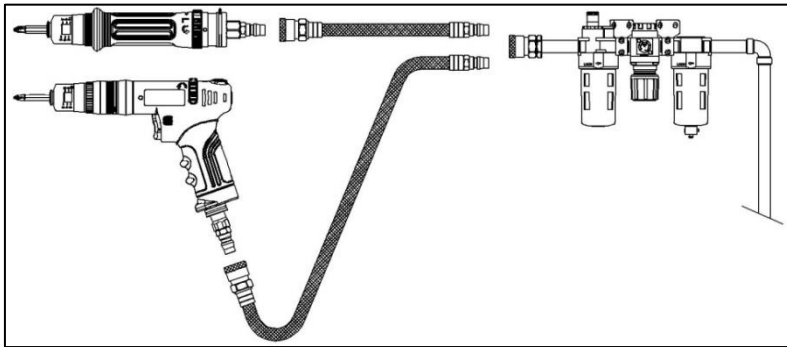
## INSTRUCTION MANUAL- ENGLISH

### 90° Angle Air Auto-Shut Off Screwdriver

This product is designed for installing and removing threaded fasteners in wood, metal, and plastic. The use of spare parts/ accessories other than those originally supplied by the manufacturer may result in a drop in performance and/or increased maintenance/noise level/vibrations, and as the result, the full cancellation of the manufacturer's liability. No other use is permitted. Professional use only.

#### Air Supply Requirements

1. Supply tool with 6.3 kg-cm<sup>2</sup> (90 psi) clean and dry air. Higher pressure drastically reduces tool life.
2. Connect tool to the airline using pipe, hose, and fitting sizes are shown in the diagram below.

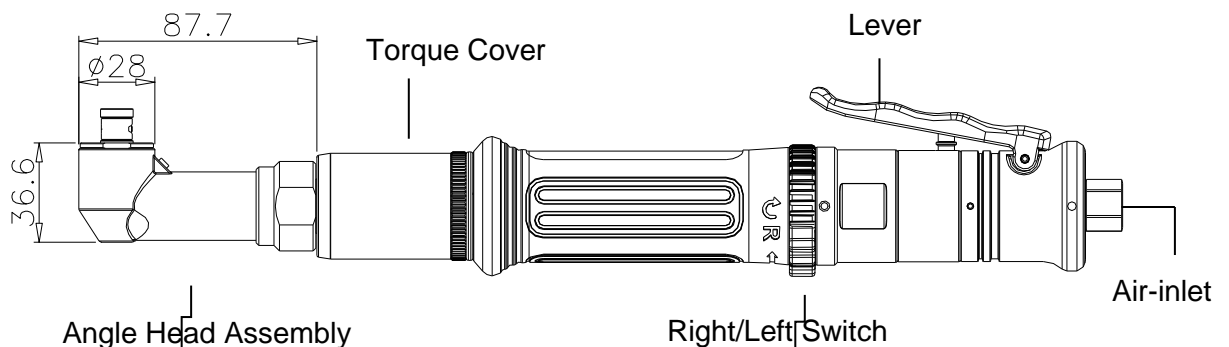


#### Lubrication

1. Use an airline lubricator with SAE #10 oil, adjusted to two (2) drops per minute. If an airline lubricator is not available, add air motor oil to the inlet once a day.
2. For gearing and clutch, use Shell-grade grease containing molybdenum.
3. Grease clutches every 12,000 screws.

#### Torque Adjustment

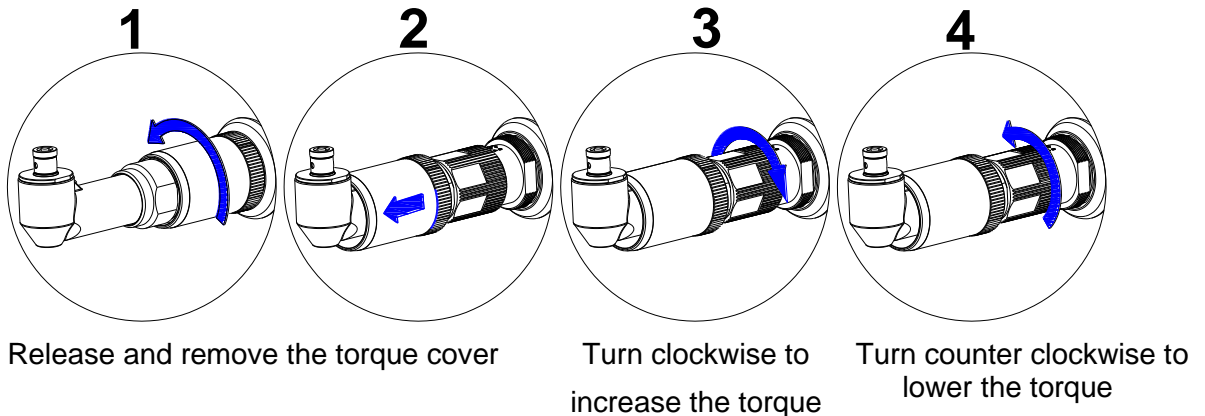
**Shut Off Clutch:** Grip the motor housing and press the tool into the fixing which is to be tightened. Press the lever and the motor will start and tighten the fixing to the required torque set by adjusting the tensions on the clutch spring. At this point, the internal drive is disengaged and the air to the motor is cut off.



### Operating Procedures

1. Make sure the air in airline is clean and dry.
2. Connect the tool with the air compressor correctly.
3. Install a socket (or a bit) to the tool. Before using, do check the socket (or a bit) being installed on the tool correctly.
4. Torque Adjustment: Take off the torque cover and turn the torque adjustment ring right (clockwise) to increase the torque. Turn the torque adjustment ring left (counter-clockwise) to reduce the torque. After setting up the torque, put torque cover back and fasten it tightly to avoid changing the set-up accidentally. (as illustrated below)
5. Right/Left Indication: Turn right (clockwise) the switch (marked "R") for tightening screws. Turn left (counter-clockwise) the switch (marked "L") for loosening screws.
6. Press the lever to activate the motor. Release the lever to stop the motor.
7. Suggestion: Correct / Re-set torques before operation on a daily basis.
8. If the tool is not to be used for a long time, re-set the torque to the lowest.

### Set-up of Torque



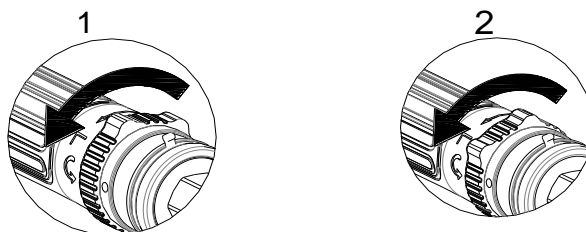
Note: After setting up torque, put torque cover back and fasten it tightly to avoid changing set-up accidentally.

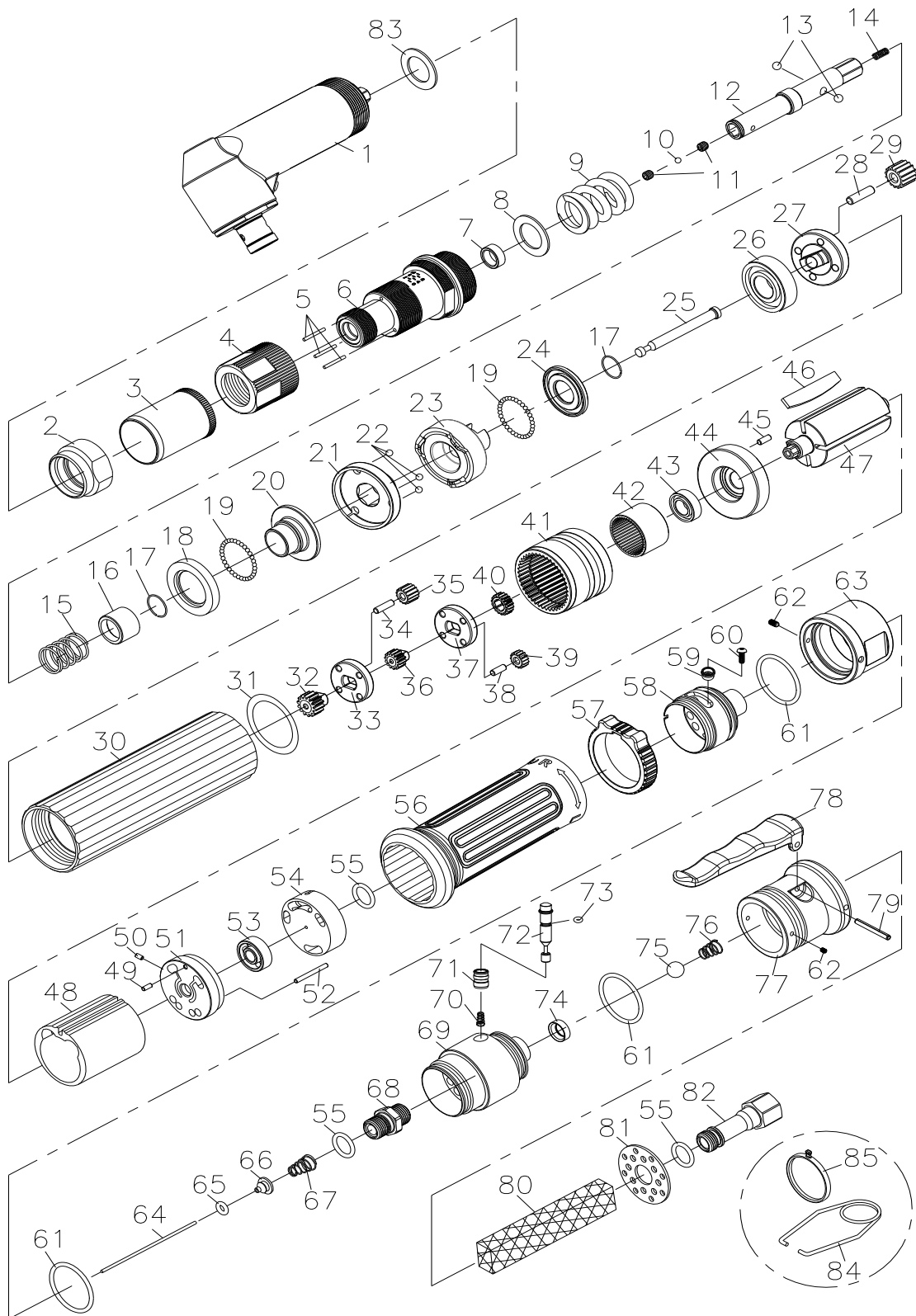
### Operation of R/L Switch

Indication R – turn right (clockwise) – fastening screw



Indication L – turn left (counterclockwise) – loosening screw



**UT8924 AUTO SHUT-OFF ANGLE NUT RUNNER - 250RPM / 5.0~28NM**


**UT8924 AUTO SHUT-OFF ANGLE NUT RUNNER - 250RPM / 5.0~28NM**

INDEX #	PARTS NO.	PARTS DESCRIPTION	QTY/ SET	INDEX #	PARTS NO.	PARTS DESCRIPTION	QTY/ SET
1	7160AH-02	90° ANGLE HEAD ASSY	1	44	7165039PG	FRONT PLATE	1
2	7160088A	LOCK NUT	1	45	589040	SPRING PIN	1
3	7160061A	REAR HOUSING	1	46	7160041PS	BLADE	4
4	7160005A	TORQUE RING	1	47	7165040PS	ROTOR	1
5	7160007PS	NEEDLE PIN	3	48	7160042PS	CYLINDER	1
6	7165008A	CLUTCH HOUSING	1	49	SPP0208	SPRING PIN	1
7	7160009A	ANVIL BUSHING	1	50	7160045PS	PIN	1
8	7160010A	WASHER	1	51	7160043PS	END PLATE	1
9	7168011PS	TORQUE SPRING	1	52	7160046PS	PIN	1
10	7160013PS	STEEL BALL	2	53	B606ZZ-NMB	BALL BEARING	1
11	HEXM506	SCREW	2	54	7160048PS	VALVE	1
12	7160012A	ANVIL	1	55	OR1898	O-RING	3
13	7160014PS	STEEL BALL	2	56	7160063PS	GRIP	1
14	7160089A	SPRING	1	57	7160051PS-RD	SWITCH	1
15	7160015PS	SPRING	1	58	7160050PS-S	END HOUSING	1
16	7160016PS	SLIDE BASE	1	59	7160060PS	SCREW HOLDER	1
17	7160017PS	C RING	2	60	7160052PS	SCREW	1
18	7160018PS	BALL RACE	1	61	OR283178	O-RING	3
19	7160019PS	STEEL BALL	60	62	HEXM306	SCREW	4
20	7160020PS	END CLUTCH	1	63	7160091A	END HOLDER-L	1
21	7160021PS-3P	CENTER CLUTCH	1	64	7165054PG	OPERATING ROD	1
22	STB3175	STEEL BALL	3	65	OR0302	O-RING	1
23	7160023PS-3P	REAR CLUTCH	1	66	7120056L	VALVE PLATE	1
24	7160024PS	RETAINER	1	67	7160057PS	SPRING	1
25	7160025PS	PILOT PIN	1	68	7160092A	AIR INLET	1
26	B6001Z-TPI	BALL BEARING	1	69	7160050A	END HOUSING	1
27	7168029PG	GEAR CAGE	1	70	7160067L	SPRING	1
28	7168081PG	PIN	4	71	7160066L	BUSHING	1
29	7168080PG	PLANETARY GEAR	4	72	7160065L	TRIGGER PIN	1
30	7165027A	CENTER HOUSING	1	73	OR0312	O-RING	1
31	7160028PS	WASHER	1	74	7160095L	VALVE SEAT	1
32	7168079PG	SUN GEAR	1	75	7160073L	STEEL BALL	1
33	7150033PS	GEAR CAGE	1	76	7160069L	SPRING	1
34	7160030PS	PIN	4	77	7160072L	TRIGGER HOLDER	1
35	7150031PS	PLANETARY GEAR	4	78	7160075L	TRIGGER	1
36	7155032PS	SUN GEAR	1	79	308003	SPRING PIN	1
37	7150033PS	GEAR CAGE	1	80	ZZ389507	SILENCER	1
38	7120030PS	PIN	4	81	7160071L	EXHAUST DEFLECTOR	1
39	7120031PS	PLANETARY GEAR	4	82	7160062L	AIR INLET	1
40	7165032PG	SUN GEAR	1	83	7160010PS	WASHER	1
41	7165036A	INTERNAL GEAR	1	84	CP1HP60	SUSPENSION RING	1
42	7165036PG	INTERNAL GEAR	1	85	7160080PS	DISTINGUISHABLE RING SET (4PC)	1
43	L-1680HH	BALL BEARING	1				

Division of Florida Pneumatic Mfg Corp.,  
851 Jupiter Park Lane,  
Jupiter, FL 33458, USA.  
Ph: (1) 561 744 9500  
Fax: (1) 561 575 5574

## EC/UKCA DECLARATION OF CONFORMITY

We **FLORIDA PNEUMATIC MFG CORP, 851 JUPITER PARK LANE, JUPITER, FL 33458, USA**

Declare under our sole responsibility that the machine falls within the provisions of the directive:

**Machine Type:** UT8924 1/4" Hex Air Auto Shut-Off Angle Nut Runner

Technical Data:

<b>Chuck Size :</b>	<u>1/4" HEX QC</u>	<b>Free Speed:</b>	<u>250 rpm</u>
<b>Weight:</b>	<u>1.90 kg (4.18 lbs)</u>	<b>Length:</b>	<u>384 mm (15.12")</u>
<b>Recommended Hose Size:</b>	<u>10m (3/8")</u>	<b>Working Air Pressure:</b>	<u>6.3 bar (90 PSI)</u>
<b>Noise:</b> (sound pressure level)	<u>75 dB(A)</u>	<b>Vibration:</b>	<u>1.82 Metres / Sec <sup>2</sup></u>
<b>Spindle size:</b>	<u>N/A</u>	<b>Serial No:</b>	_____

To which this declaration relates, is in conformity with the requirements of : The Machinery Directive 2006/42/EC, General Safety ISO 12100:2010, Specific Safety-Impact Wrenches: ISO 11148-6: 2012, Specific Vibration- ISO 28927, Noise: ISO 15744:2008

Name and position of issuer: **Tony Le Neveu: V P Engineering & Development**

