

Read Operating Instructions
Always become familiar with all the instructions and warnings before operating any power tool.



Always Wear Approved Eye Protection
Impact resistant eye protection should meet or exceed the standards as set forth in the United States ANSI Z87.1, Occupational and Educational Eye and Face Protection. Look for the marking Z87.1 on your eye protection to insure that it is an approved style. For further information, ANSI Z87.1, Occupational and Educational Eye and Face Protection, is available from the American National Standards Institute, Inc., 11 West 42nd Street, New York, NY 10036.



Hearing Protection is Recommended
Hearing protection should be used when the noise level exposure equals or exceeds an 8 hour time-weighted average sound level of 85 dBA. Process noise, reflective surfaces, other tools being operated nearby, all add to the noise level present in your work area. If you are unable to determine your noise level exposure, we recommend the use of hearing protection.



Avoid Prolonged Exposure to Vibration
Tools can vibrate during use. Prolonged exposure to vibration or very repetitive hand and arm movements, can cause injury. Stop using any tool if discomfort, tingling feeling or pain occurs. You should consult your physician before resuming use of the tool.
90 PSIG Maximum
This tool is designed to operate at



WARNING:
Use of threaded hub grinding wheels:

This tool features a 5/8" x 11 TPI unified spindle thread for mounting grinding wheels, along with ANSI standard mounting flanges designed for mounting type 27 grinding wheels. The use of 5/8" x 11 TPI threaded hub grinding wheels as alternatives to type 27 grinding wheels has become more common. If you intend using threaded hub grinding wheels with this grinder, the following procedures must be followed at all times:
Before conducting any of the procedures below the grinder must be disconnected from the air supply.
1) The rear wheel mounting flange must be removed from the grinder before use.
2) Once the threaded hub wheel is fitted it must be securely tightened by holding the spindle of the grinder with the wrench provided, while tightening the wheel clockwise with a second wrench placed on the hexagon section at the rear face of the wheel. It is also recommended that for the first operation after fitting the wheel; that the wheel is held firmly on the work surface prior to starting the grinder.
3) Only use threaded hub wheels certified by the manufacturer to meet ANSI B7.1 standards.
Failure to follow the procedures above can cause injury or death, as deceleration of the grinder may cause the wheel to fly-off; in addition the wheel will not be properly enclosed within the ANSI standard guard supplied with the grinder.

an air pressure of 90 pounds per square inch gauge pressure (90 PSIG) maximum, at the tool. Use of higher air pressure can, and may cause injury. Also, the use of higher air pressure places the internal components under loads and stresses they were not designed for, causing premature failure. The air supply should be clean and dry, preferably lubricated. For best results, drain the moisture from your compressor daily.

WARNING:
Always use accessories with an RPM rating that meets or exceeds the tool RPM rating.

Some dust created by power sanding, sawing, grinding, drilling, and other construction activities contains chemicals known to cause cancer, birth defects or reproductive harm. Some examples of these chemicals are:

- Lead from lead-based paints
- Crystalline silica from bricks, cement and other masonry products
- Arsenic and chromium from chemically treated lumber

Your risk from these exposures varies, depending on how often you do this type of work. To reduce your exposure to these chemicals, work in a well-ventilated area and work with approved safety equipment such as those dust masks that are specially designed to filter out microscopic particles.

Description

Universal Tool 9" angle grinder has a powerful 2.5 horsepower motor for added stall resistance. Best for continuous use on extra heavy duty surface preparation and material removal. Includes a side handle for increased operator control and rear exhaust.



Safety Instructions

The following instructions are furnished as general guidelines for use of your pneumatic tool. They cannot comprehensively cover all possible or conceivable uses of the subject tool. For additional information on the safe use of air tools, we advise you to obtain a copy of ANSI B186.1 Safety Code for Portable Air Tools, available from the following source:

American National Standards Institute, Inc.
11 West 42nd Street
New York, NY 10036.

The use of the word "shall" in the following instructions, indicates that adherence to the particular requirement is necessary to conform to ANSI B186.1.

Tool Application and Usage

Portable tools shall be used only for the purposes intended in their design and within the capacity for which they were intended and rated. It shall be the tool owner's and/or employer's responsibility to instruct each operator in the safe use of the tool. Tools shall not be used without guards and safety

devices as furnished by the manufacturer. Where an air tool is modified or altered, the modifier shall provide the safeguards to enable it to be safely used in the operations intended and to comply with any applicable provisions as contained in ANSI B186.1.

Tool Installation

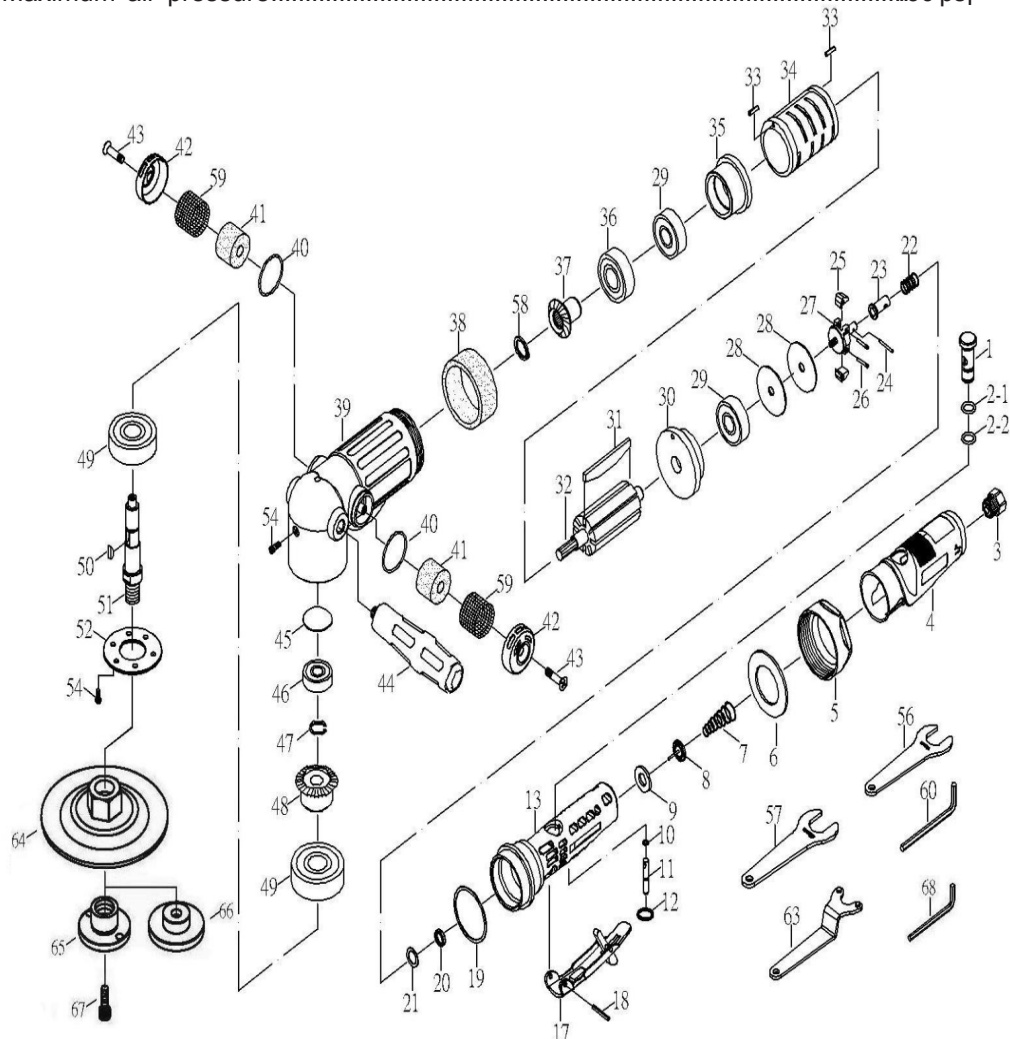
Pressure regulators shall be used to limit air pressure to the rated pressure where the supply pressure exceeds the tool's rated pressure. Air hoses and lines shall be relieved of compressed air before being disconnected or disjointed, unless there is automatic valve closing protection at the joint being separated. Synthetic lubricants which can cause deterioration of elastomer seals shall not be used in air systems of air tools.

Tool Maintenance

It shall be the tool owner's and/or employer's responsibility to assure that tools are maintained in a safe operating condition. Tool maintenance and repair shall be performed by authorized, trained, competent personnel. Tools shall be disconnected from their compressed air supply before repairs are attempted. Repairs shall be consistent with the manufacturer's recommended procedures. Tool, hoses and fittings shall be replaced if unsuitable for safe operation. It shall be the tool owner's and/or employer's responsibility to keep required rating markings and warnings on the tool in legible condition.

Specifications

Max Wheel Size.....	9" type 27
Spindle size.....	.5/8"-11
Free speed.....	6,000RPM
Weight.....	7.7 lbs
Length.....	12.9"
Average air consumption.....	10CFM
Recommended hose size.....	1/2" I.D
Air inlet.....	3/8" NPT
Maximum air pressure.....	90 psi



NO	PART NO	DESCRIPTION	QTY
1	987001	REGULATOR	1
2-1	90B-02	O-RING (P10)	1
2-2	9288303	O-RING (P9)	1
3	987003	INLET BUSHING	1
4	987004	PROTECTING RUBBER	1
5	989005	CLAMP NUT	1
6	989006	WASHER	1
7	987007	SPRING	1
8	987008	VALVE	1
9	987009	WASHER	1
10	90B-04	O-RING (3.5*1.4)	1
11	9288306	VALVE STEM	1
12	90B-30	SNAP RING	1
13	989013	HOUSING	1
17	980509	LEVER	1
18	912012.1	PIN (3*24L)	1
19	989019	WASHER	1
20	987020	SPRING HOLDER	1
21	987021	WASHER (14*9.5*0.5T)	1
22	989022	SPRING	1
23	987023	GOVERNOR VALVE	1
24	987024	PIN (2*11.8L)	1
25	987025	GOVERNOR WEIGHT	2
26	987026	GOVERNOR PIN	2
27	987027	GOVERNOR CAGE	1
28	987028	WASHER	2
29	987036	BEARING (6202ZZ)	2
30	989030	REAR PLATE	1
31	987031	ROTOR BLADE	8
32	989032	ROTOR	1
33	981326	PIN (3*8L)	2

NO	PART NO	DESCRIPTION	QTY
34	989034	CYLINDER	1
35	989035	FRONT PLATE	1
36	989036	BEARING (6203ZZ)	1
37	989037	BEVEL GEAR	1
38	987038	SILENCER	1
39	989039	ANGLE HOUSING	1
40	9ST70011	O-RING (26.7*1.78 A-023)	2
41	987041	SILENCER	2
42	987042	EXHAUST SLEEVE	2
43	987043A	SCREW (M5*0.8P*14L)	2
44	987044	HANDLE	1
45	987045	SPACER (26*1T)	1
46	987046	BEARING (629ZZ)	1
47	987047	RETAINING RING (STW-15)	1
48	989048	BEVEL GEAR	1
49	987049	BEARING (6303ZZ)	2
50	987050	KEY (5*16)	1
51	989051A	SHAFT	1
52	987052	FACE PLATE	1
54	970403	SCREW (M5*12L)	7
56	987056	STOP SPANNER (19mm)	1
57	988045	STOP SPANNER (25mm)	1
58	987058	SNAP RING (STW-9)	1
59	987059	STAINLESS MESH	2
60	987060	HEX (6MM)	1
63	987057	DISC SPANNER	1
64	988041A	FACE PLATE	1
65	988042	DISC NUT	1
66	988043	DISC NUT	1
67	988044	SCREW	1
68	960929	HEX (5MM)	1

Limited Warranty

Not Shown 9" Disc Cover Part # A-094335-05

Universal Tool warrants its tools to be free from defects in material and workmanship for one year from the date of purchase. This warranty does not apply to tools which have been abused, misused, modified or repaired by someone other than Universal Tool or its authorized service centers. If a Universal Tool proves defective in material or workmanship within one year after purchase, return it to any authorized service center or to Universal Tool, freight prepaid. Please enclose your name, address and adequate proof of purchase date with a brief description of the defect. Universal Tool will, at its option, repair or replace defective tools, free of charge. Repairs or replacements are warranted as described above for the remainder of the warranty period. Universal Tool's sole liability and your exclusive remedy under this warranty is limited to repair or replacement of the defective tool. There are no other warranties expressed or implied and Universal Tool shall not be liable for incidental, consequential or special damages, or any other damages, costs or expense of repair or replacement as described above.

⚠ WARNING
 This tool is not suitable for use with Type 1, Type 41 and Type 42 cut off wheels. Do not fit Type 1 or Type 41 or Type 42 wheels to this tool. Using Type 1, Type 41 and Type 42 wheels with this tool can cause serious injury.