




Universal Tool

Operator Instructions

Includes - Foreseen Use, Work Stations, Putting Into Service, Operating, Dismantling, Assembly and Safety Rules

Important

Read these instructions carefully before installing, operating, servicing or repairing this tool. Keep these instructions in a safe accessible place.

Manufacturer/Supplier Universal Air Tool Company Limited Unit 8 Lane End Industrial Park High Wycombe Bucks HP14 3BY Tel No (01494) 883300 Fax No (01494) 883237	Product Type Low Vibration Air Saw 10mm Stroke	RPM N/A Cycles Per Min 10,000	
	Model No/Nos UT5922LV	Serial No	

Product Nett Weight 1.21 lbs 0.55 Kg	Recommended Use Of Balancer Or Support No	Recommended Hose Bore Size - Minimum 3/8 Ins 10 M/M	Recommended Max. Hose Length 30 Ft 10 M
--	--	---	---

Air Pressure		Noise Level Sound Pressure Level 79.0 dB(A)	
Recommended Working	6.3 bar 90 PSI	Test Method Tested in accordance with Pneurop test code PN8NTC1 and ISO Standard 3744	
Recommended Minimum	n/a bar n/a PSI		
Maximum	7 bar 100 PSI		

Personal Safety Equipment		Vibration Level 1.2 Metres / Sec²	
Use - Safety Glasses	Yes	Test Method Tested in accordance with ISO standards 8662 Parts 1 & 12	
Use - Safety Gloves			
Use - Safety Boots			
Use - Breathing Masks			
Use - Ear Protectors			

Foreseen Use Of The Tool

This tool is designed for the purpose of sawing materials when fitted with the saw blades supplied by, or recommended by the manufacturers. Do not use the tool for any other purpose than that specified without consulting the manufacturer or the manufacturers authorised representative. Do not modify the tool even for intended use as a saw.

It is recommended that the tool is connected to the air supply as shown in figure 1. Do not connect the tool to the air line system without incorporating an easy to reach and operate air shut off valve. The air supply should be lubricated. It is strongly recommended that an air filter, regulator, lubricator (FRL) is used as shown in Figure 1 as this will supply clean, lubricated air at the correct pressure to the tool. Details of such equipment can be obtained from your supplier. If such equipment is not used then the tool should be lubricated by shutting off the air supply to the tool, depressurising the line by pressing the trigger on the tool. Disconnect the air line and pour into the intake bushing a teaspoonful (5ml) of a suitable pneumatic motor lubricating oil preferably incorporating a rust inhibitor. Reconnect tool to air supply and run tool slowly for a few seconds to allow air to circulate the oil. If tool is used frequently lubricate on daily basis and if tool starts to slow or lose power. It is recommended that the air pressure at the tool whilst the tool is running is 90 p.s.i./6.3 bar and this pressure should not be exceeded.

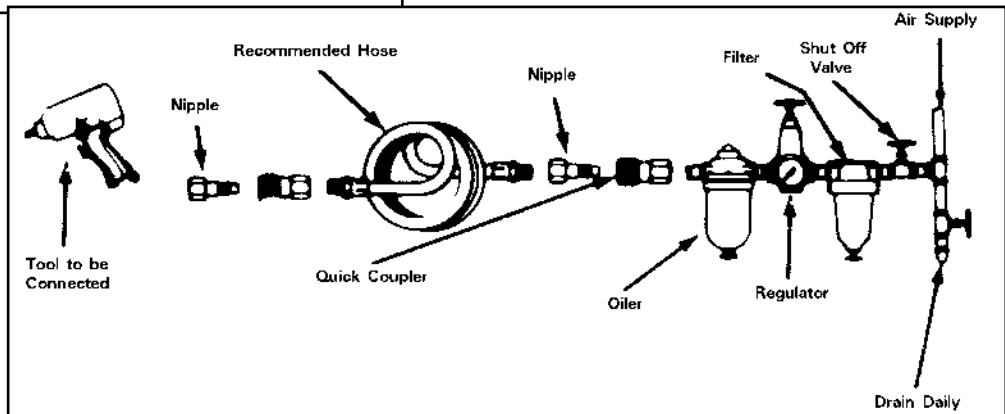
Work Stations

The tool should only be used as a handheld hand operated tool. It is always recommended that the tool is used when standing on the solid floor. It can be used in other positions but before any such use, the operator must be in a secure position having a firm grip and footing.

Putting Into Service

Air Supply

Use a clean lubricated air supply that will give a measured air pressure at the tool of 90 p.s.i./6.3 bar when the tool is running with the trigger fully depressed. Use recommended hose size and length. It



Operating

To fit saw blade slacken grub screw and push saw blade as supplied with the widest end into the holder and tighten grub screw. Do not over tighten. Slacken set bolt and adjust work guide as required. Use only saw blades as type supplied. Connect the tool to a suitable air supply. Let the saw blade cut and never load too heavily as this may cause the saw blade to break. Always try to keep the blade in line with the saw cut as bending the blade while cutting may cause the blade to break. Be aware that exposure to vibration can cause injury.

Safety Rules For A Saw

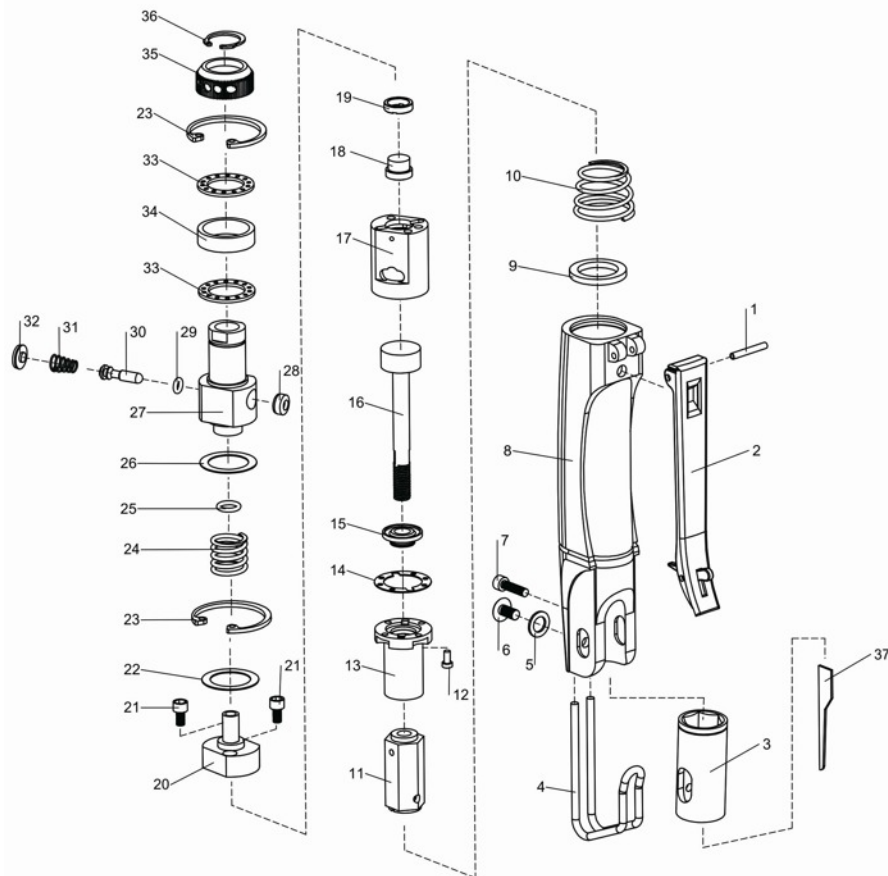
- 1) Read all the instructions before using this tool. All operators must be fully trained in its use and aware of these safety rules.
- 2) Do not exceed the maximum working air pressure.
- 3) Use personal safety equipment.
- 4) Use only compressed air at the recommended conditions.
- 5) If the tool appears to malfunction remove from use immediately and arrange for service and repair.
- 6) If the tool is used with a balancer or other support device ensure that it is fixed securely.
- 7) Always keep hands away from the working attachment fitted to the tool.
- 8) The tool is not electrically insulated. Never use the tool if there is any chance of it coming into contact with live electricity.
- 9) Always when using the tool adopt a firm footing and/or position and grip the tool firmly to be able to counteract any forces or reaction forces that may be generated whilst using the tool.
- 10) Use only correct spare parts. Do not improvise or make temporary repairs.
- 11) Do not lock, tape, wire, etc the on/off valve in the run position. The trigger/lever etc must always be free to return to the 'off' position when it is released.
- 12) Always shut off the air supply to the tool, and depress the trigger/lever etc to exhaust air from the feed hose before fitting, adjusting or removing the working attachment.
- 13) Check hose and fittings regularly for wear. Replace if necessary. Do not carry the tool by its hose and ensure the hand is remote from the on/off control when carrying the tool with the air supply connected.
- 14) Take care against entanglement of moving parts of the tool with clothing, ties, hair, cleaning rags, etc. This will cause the body to be drawn towards the tool and can be very dangerous.
- 15) It is expected that users will adopt safe working practices and observe all relevant legal requirements when installing, using or maintaining the tool.
- 16) Do not install the tool unless an easily accessible and easily operable on/off valve is incorporated in the air supply.
- 17) Take care that the tool exhaust air does not cause a problem or blows on another person.
- 18) Never lay a tool down unless the working attachment has stopped moving.

Tool Maintenance

It shall be the tool owner's and/or employer's responsibility to assure that tools are maintained in a safe operating condition. Tool maintenance and repair shall be performed by authorised, trained, competent personnel. Tools shall be disconnected from their compressed air supply before repairs are attempted. Repairs shall be consistent with the manufacturer's recommended procedures. Tool, hoses and fittings shall be replaced if unsuitable for safe operation. It shall be the tool owner's and/or employer's responsibility to keep required rating markings and warnings on the tool in legible condition.

UT5922LV

Low Vibration Air Saw



Ref No	Part No	Description
1	5922LV-01	Lever Pin
2	5922LV-02	Throttle Lever
3	5922LV-03	Bushing
4	5922LV-04	Work Guide
5	5922LV-05	Washer
6	5922LV-06	Set Screw
7	5922LV-07	Screw
8	5922LV-08	Housing
9	5922LV-09	Housing Oil Seal
10	5922LV-10	Valve Spring
11	5922LV-11	Blade Chuck
12	5922LV-12	Screw (4)
13	5922LV-13	Front Plate
14	5922LV-14	Washer
15	5922LV-15	Rear Bumped
16	5922LV-16	Piston Stem
17	5922LV-17	Cylinder
18	5922LV-18	Valve Sleeve
19	5922LV-19	Spacer

Ref No	Part No	Description
20	5922LV-20	Rear End Plate
21	5922LV-21	Screw (2)
22	5922LV-22	Washer
23	5922LV-23	Retainer Ring (2)
24	5922LV-24	Spring
25	5922LV-25	O-Ring
26	5922LV-26	Washer
27	5922LV-27	Valve Housing
28	5922LV-28	Valve Stem Sleeve
29	5922LV-29	O-Ring
30	5922LV-30	Valve Stem Sleeve
31	5922LV-31	Valve Spring
32	5922LV-32	Valve Stem Rear Cover
33	5922LV-33	Muffle (2)
34	5922LV-34	Muffle
35	5922LV-35	Muffle Cap
36	5922LV-36	Retainer Ring
37	5922LV-37	Saw Blade

Declaration of Conformity
Universal Air Tool Company Limited
Unit 8, Lane End Industrial Park, High Wycombe, Bucks, HP14 3BY, England

declare under our sole responsibility that the product

Model UT5922LV Mini Low Vibration Saw, Serial Number
to which this declaration relates is in conformity with the following standard(s) or other normative document(s)
EN792 (Draft), EN292 Parts 1 & 2, ISO 8662 Parts 1, 2 & 14, Pneurop PN8NTC1
following the provisions of **Directive 2006/42/EC**

Lane End

ARTHUR PATERSON



Place of issue

For and on behalf of the company

Accessories

Notes

Distributor