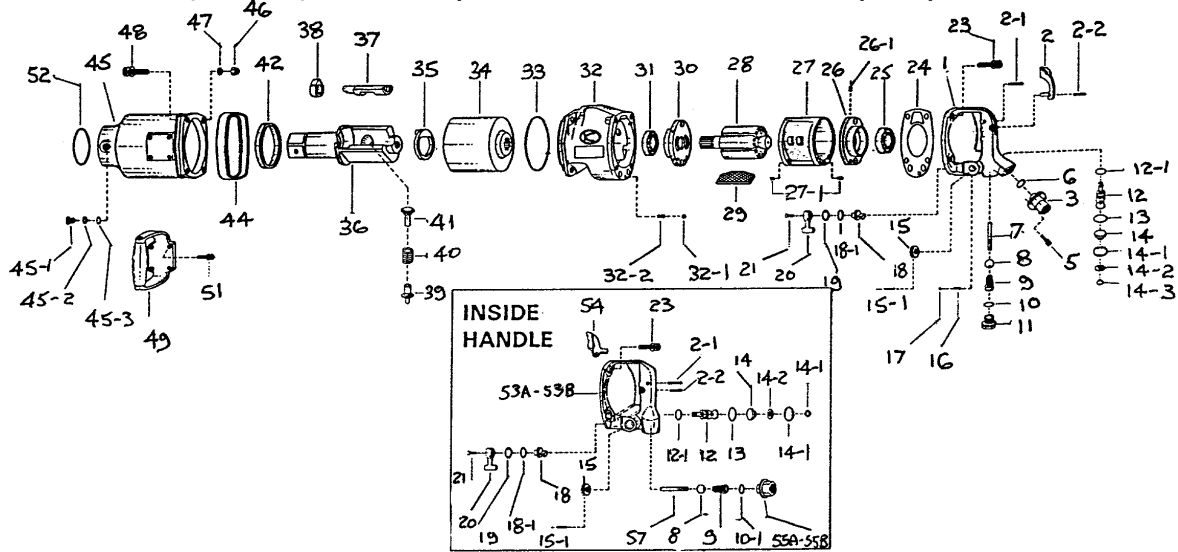


**UT150 (HP150) 1½" Square Drive Inside Lever Grip Impact Wrench**


Ref No	Part No	Description	Ref No	Part No	Description
1	0142080B	Handle C.P.	28	0550021	Rotor
2	0132117D	Throttle Lever	29	0550022	Rotor Blade (6)
2-1	Z0614x28	Pin	30	0550023	Front End Plate
2-2	Z0614x22	Pin	31	Z0016206Z	Ball Bearing
3	0345290	Inlet Bushing	32	055181B	Motor Case C.P. (5000G)
5	Z0665x12A	Bolt (4)	32-1	Z0106D	Steel Ball
6	Z040P16	O-Ring	32-2	0132991	Spring
7	0142013B	Throttle Valve Pin	33	Z041S110	O-Ring
8	Z0115/8D	Throttle Valve	34	0550026	Hammer Wheel
9	0132190	Throttle Valve Spring	35	0550050	Retainer
10	Z040P20	O-Ring	36	0550030A	Anvil
10-1	Z040P28J	O-Ring	37	0550028	Anvil Piece
11	0132150	Plug	38	0550027	Cam
12	0442313	Regulator Valve	39	0550051A	Plunger A
12-1	Z040P14	O-Ring	40	0550053	Spring (5000G)
13	Z041S25	O-Ring	41	0550052	Plunger B
14	0442350	Regulator Cap	42	0550029	Bushing
14-1	Z03125	Retainer	44	0142071	Rubber Protector
14-2	04423501	Regulating Cap Lock	45	0550182	Impact Housing C.P.
14-3	Z03210	Retainer	45-1	0132152	Grease Screw
15	0442314	Regulating Knob	45-2	Z0996	Toothed Lock Washer
15-1	Z0563x22	Spring Pin	45-3	Z040P6	O-Ring
16	Z0104D	Steel Ball	46	Z0918	Lock Nut (4)
17	0114193	Spring	47	Z0968x1	Washer (4)
18	0142015B	Reversing Valve	48	Z0668x45A	Bolt (4)
18-1	Z041S18	O-Ring	49	0442387	Dead Handle C.P.
19	Z03121	Retainer	51	Z0666x16A	Bolt (4)
20	0132915	Reverse Lever	52	Z040P50	O-Ring
21	Z0674x12	Screw	<b>Parts for Inside Handle C.P.</b>		
23	Z0668x22A	Bolt (4)	53a	0550180BNS	Handle C.P. (NPT)
24	0142006B	Motor Housing Gasket	53b	0550180BTS	Handle C.P. (PT)
25	Z0016205	Ball Bearing	54	0345417	Throttle Lever
26	0132124	Rear End Plate	55a	0132919NIS	Inlet Bushing (NPT)
26-1	Z0565x10	Pin	55b	0132919IS	Inlet Bushing (PT)
27	0140509	Cylinder	57	0550113BT	Throttle Lever Pin
27-1	Z0565x10	Pin (2)			